



*caring about you & your environment*

**Report 01.804**

21 November 2001

File: E/6/18/3

[Report 2001.Env01.804:JB:mem]

Report to Environment Committee  
from Dr Jane Bradbury, Divisional Manager, Environment

## **Divisional Manager's Report**

### **1. Purpose**

To inform the Committee about the activities and progress of the Environment Division and about any matters that have arisen since the Committee's last meeting.

### **2. Managers' Reports**

The Department Managers' and Divisional Accountant's reports follow.

### **3. Welcome**

I'd like to take this opportunity to welcome those who are new to the Environment Committee and to welcome back those who have previously served on the Committee.

In my opinion, the work of the Committee is at a particularly interesting stage as many initiatives started in the last triennium are now coming to fruition.

I hope that you enjoy the challenges facing us and hope that we can make even more progress in the next three years. Please do not hesitate to ask if you'd like more information about anything. Staff will be pleased to help.

### **4. Dairy and the Environment**

The issue of dairy expansion and environmental pressures has received some media coverage recently. There has been some concern about the effect of dairying practices, particularly the disposal of effluent, on our waterways.

After a meeting on 10 October 2001 involving the Hon. Jim Sutton, Minister of Agriculture and the Hon. Marion Hobbs, Minister for the Environment, and representatives of Fonterra Co-op. Group Ltd, and various government departments, a steering group has been set up to identify both problems and solutions. Barry Harris, CEO Environment Waikato has been a champion of this issue and represents local government on the group. The strategic importance of both the economic and environmental issues involved has been fully recognised and it is pleasing to see some positive action.

## 5. Care Groups

At Solway Park I mentioned the success of the Waitohu Streamcare Group. Several Councillors have approached me asking for more information about this work. There is a report on Care Groups in this Order Paper, but for your interest I **attach** a newsletter that has been produced by the Waitohu Group. I think it is a good example of what can be achieved with these groups.

In the New Year we will be organising tours so that Councillors can see some of the work at first hand.

## 6. Recommendation

*It is recommended that the Committee:*

- (1) *receives the report; and*
- (2) *notes the contents.*

Report prepared by:

JANE BRADBURY  
Divisional Manager, Environment

### **Attachment:**

1. A copy of the Waitohu News

# **Environment Coordination Report**

## **Geoff Skene, Manager**

**November 2001**

### **1. Take Care – Community Environmental Care Programme (Nigel Clarke and others)**

This year's applications for funding from this programme are discussed in Report 01.809 in this Order Paper. Existing groups continue to work on their projects in various ways. Some highlights are:

- The Waimapehi Stream group at Pukerua Bay has recently undertaken a significant amount of weed and rubbish removal, planted karaka trees and is now gearing up to do comprehensive monitoring of the stream, bird life, and other ecological aspects of the local environment.
- The Manuka Street group in Masterton is working on a sign for their project.
- The Waitohu Stream Care Group is going from strength to strength, with over 60 members on its mailing list. Recent activity has focused on potting up plants from local seed and on-going water monitoring. The November newsletter has just been circulated.
- The Greendale group has been track building and finalising their planting plan.

### **2. Take Charge – Business Environmental Education Programme (Barry Strong and others)**

We are about to commence implementing *Take Charge* in the Seaview/Gracefield industrial area. Letters will be sent to all of the businesses in the area offering this pollution prevention programme and we will also be targeting specific businesses at high risk or with a pollution history. The programme is a natural adjunct to the Council's efforts on the Waiwhetu Stream and will be promoted in this light. We are using this local launch of the programme to reinforce the pollution prevention message and advertise the "Pollution Hotline" and our response capability.

### 3. **Take Action (Jo Campbell; Richard Morgan; Olwen Narbey; Jo Fagan)**

Considerable progress has been made lately. With very little promotional effort on our part, 12 schools (each with three or four classes) have signed up to do the guided programme with us from February next year. This is the total number we can do in our first year. The schools come from across the Region. In addition, there has been quite a lot of interest from schools wanting to do the programme on their own. Forty teachers have signed up for our first training workshop. A handful of other schools have started this term, including Owhiro Bay School.

The Take Action web site ([www.takeaction.wrc.govt.nz](http://www.takeaction.wrc.govt.nz)) is now operational and can be accessed by anyone. The entire programme is available on the site (teachers can undertake the programme in this way if they wish), as well as interactive games for children, and ways to communicate with others doing the programme and spread the word about fresh water.

Three pilot schools have been doing interesting “action projects” as they put their learning to practical effect. Parkway School in Wainuiomata did a number of things, including planting by their stream, a stormwater pollution sign on a local bus, a pamphlet, a web site, and a video. Hiona School in Masterton have great plans for the waterway that runs through the school grounds and presented these to the Regional Council and District Council recently. These action projects are described in greater detail in the Newsletter on the Take Action web site.

The Take Action programme will be officially launched on World Water Day, in March 2002.

We have also been working on the ecobus concept and developing a multi-media presentation to excite and entertain the children in the classes doing the guided programme. This travelling road show should give *Take Action* a significant public profile.

### 4. **Waiwhetu Stream (Tim Porteous)**

The Landscape Restoration plan for the stream has been completed by our consultants and presented to the stream working group. It provides a very useful restoration direction for the stream and will help local residents get involved in discussions about its future. The next step is for the working group to put some priorities (as it sees them) on the restoration suggestions in the plan, before discussing it with the Hutt and Regional Councils and asking for community comment.

### 5. **Ecosystem Information (Tim Porteous)**

Two brochures for landowners are in preparation as part of the Council’s biodiversity programme. The aim of the “Need A Hand?” brochure is to alert landowners to the Council’s biodiversity services, such as assistance with covenanting and pest management. The second is being jointly developed with other agencies involved in

land protection (DOC, Queen Elizabeth II Trust, territorial authorities), and will describe the range of protection mechanisms available in the Region.

6. **Wellington Environmental Reference Group (Geoff Skene)**

I attended a meeting of this Wellington City Council group on Thursday, 15 November. The group provides advice and a sounding board for the City Council on environmental matters and is a very useful conduit of information for the Regional Council. We were briefed on the city's upcoming central city greening plan and the management plan process for the outer town belt. A WRC submission on the discussion document for the latter is being co-ordinated by John Holmes.

There are now many situations where the Regional Council is working alongside WCC officers and community members on waterway and ecosystem management (e.g., plant and animal pest eradication) projects. The Reference Group will help ensure these are co-ordinated and effective.

# **Resource Policy Department Report Wayne Hastie Manager**

**November 2001**

## **1. Maintaining Regional Policies and Plans (Murray McLea)**

The Policy and Finance Committee approved the draft plan changes for consultation according to the First Schedule of the Resource Management Act 1991. Withdrawal of the Transitional Regional Plan is included in the plan changes. Changes are being made to all the other plans except for the Regional Coastal Plan.

Comments were due by 17 November, although consultation will extend until the end of November. Most comments received to-date are of a minor or technical nature. Two matters that require further consideration are the boundaries for the floodway in the Hutt Valley, and the rules associated with the diversion of water.

## **2. Regional Plan Implementation**

### **2.1 Silt Guidelines (Paul Denton)**

A detailed review of Auckland Regional Council's (ARC) silt control guidelines has been completed and a work programme developed to prepare our own guidelines based on the ARC document. We have engaged a consultant to review and revise the ARC guidelines to ensure that they are appropriate for the Wellington Region. The consultant is due to report back mid-November

### **2.2 Freshwater Ecosystems (Murray McLea)**

A draft contract has been sent to NIWA for a survey of whitebait spawning habitat in the Wairarapa part of the Region. This will complement the survey done last financial year in the western part of the Region. Copies of last year's report are in demand from Iwi, territorial authorities and the Department of Conservation.

A meeting was held with Massey University to select sites for their survey of 70 freshwater fish sites. Wairarapa Division and Department of Conservation staff assisted with the selection of sites. A draft contract has been prepared for Massey University to carry out the work.

### **2.3 Marine protection (Paul Denton)**

Work is progressing well and is the subject of a separate report to the Committee.

## 2.4 **Wetland Recovery Programme (Melanie Dixon)**

Three recent site visits have been made as part of the wetland advisory service – one in the Otaki Gorge, one at Korokoro and one at Pukehou (Pritchard) wetland in Otaki. The first two are both essentially riparian in nature rather than wetland based. However, both landowners appear keen on fencing and replanting their stream banks with native species. With respect to the Pukehou wetland, the Council is working co-operatively with the Department of Conservation, Fish and Game Council, and the Kapiti Coast District Council.

Work has also been undertaken to identify wetland projects for consideration as KNE projects for 2001/2002. This has involved reviewing old information (often based on fieldwork undertaken in the 1980's) and verifying its accuracy with site visits. Staff from Biosecurity, Wairarapa Operations, Queen Elizabeth II National Trust, and Fish and Game have assisted with prioritisation of wetlands for recovery.

## 3. **Iwi matters (Keriana Wilcox)**

The first Ara Tahi meeting for the new triennium is to be held on 21 November. Included in the agenda is an update report from the Maori Policy Advisors that details the status of the various Iwi projects, technical workshops and training initiatives. This material will not be repeated here.

Te Runanganui o Taranaki Whanui ki te Upoko o Te Ika a Maui have requested that the Council second a staff member to the Iwi part time (1-2 days per week) for a few weeks in the New Year to help define the structure of their Iwi Environmental Management Plan. We are currently considering this request and the opportunity it provides the Council to further its relationship with the Iwi.

## 4. **Hazards (Roz Groves)**

A contract for the meteorological hazards and climate change study is being negotiated with NIWA. Mike Harkness from the Resource Investigations Department will act as one of the team members contributing to the project.

Consideration has been given on further work on the tsunami hazard. It is likely that we will commission a report to identify what responses have been adopted overseas and elsewhere in New Zealand, and to recommend what is appropriate for the Wellington Region given our state of knowledge and tsunami risk.

As reported to the last meeting, in conjunction with the Emergency Management Department we are preparing a number of Fact Sheets on hazards in the Region. Initially ten Fact Sheets will be produced and they will be available in printed form and on the Council's web site. Fact sheets for tsunami, combined earthquake hazard, petroleum products, hazardous substances, landslides and wildfire have been drafted and comments received from the Territorial Authority Emergency Management Officers.

## 5. Oceans Policy (Wayne Hastie)

The Ministerial Advisory Committee completed its report *Healthy Sea: Healthy Society – Towards an Oceans Policy for New Zealand* on 30 September. A copy of the Summary document is **attached** to this report.

The report contains a summary of the findings of the consultation that was carried out to identify New Zealanders aspirations, concerns, values and visions for the sea. Based on these findings, Ministers are currently considering a vision statement for recommendation to Cabinet. Adoption of a vision will signal the end of Stage 1 of this project. Officials are now focused on defining the work programme for Stage 2, known as “Designing the Vision”. This will be the core policy development stage.

At this time I remain as the local government representative on the Officials Group. Local Government will also have a representative on the Chief Executives Group that meets occasionally as part of the management framework.

### Attachment

2. Healthy Sea: Healthy Society – Towards an Oceans Policy for New Zealand



# Resource Investigations Department Report John Sherriff, Manager

## November 2001

### Resource Information

#### 1.1 Flood Warning

The Resource Investigations Department provides a flood warning and monitoring service for the western part of the Wellington Region. Rainfall and river level recorders around the Region automatically relay information to the Regional Council Centre. When specified rainfall intensities or river levels are reached the system automatically alerts staff who implement response procedures.

Special weather bulletins issued by the Meteorological Service provided forewarning of conditions which could lead to heavy rainfall and high river levels.

Since the last meeting of the Committee the following alarms was received and responded to:

21 September	Heavy Rainfall : Oriwa
7 October	Heavy Rainfall : Warwick's
28 October	Heavy Rainfall : Transmission Lines

### 2. Resource Analysis

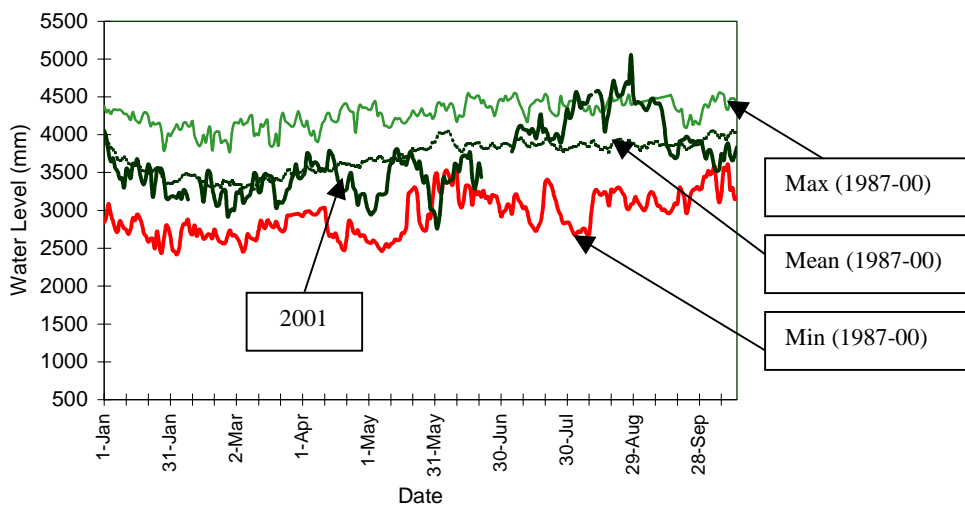
#### 2.1 Groundwater Levels

The Department monitors groundwater levels at 46 sites around the western Region. We present the records for two bores in the Waiwhetu Aquifer and on the Kapiti Coast to each Environment Committee meeting so that you can get a general indication of the state of groundwater resources in the Region.

##### *Waiwhetu Artesian Aquifer*

Artesian pressure measured at McEwan Park is currently at slightly below average levels. Spring tides and low barometric pressure caused the very high pressures recorded during August.

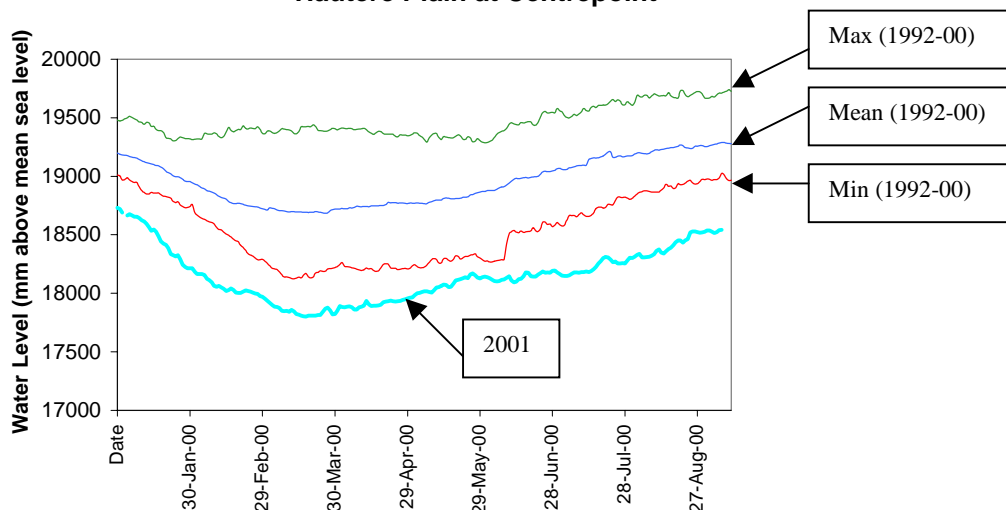
### Water Level at McEwan Park



### *Kapiti Coast*

The groundwater levels at most Kapiti monitoring sites (represented here by the Hautere Plains site) are still at record low or below average values. However, these sites are showing recovery rates that are consistent with the patterns observed in previous years. The rainfall that occurred throughout October is expected to significantly enhance the current recovery. No adverse effects on groundwater users have been reported as a result of the low water levels and the record low levels may simply be a reflection of the relatively short length of record.

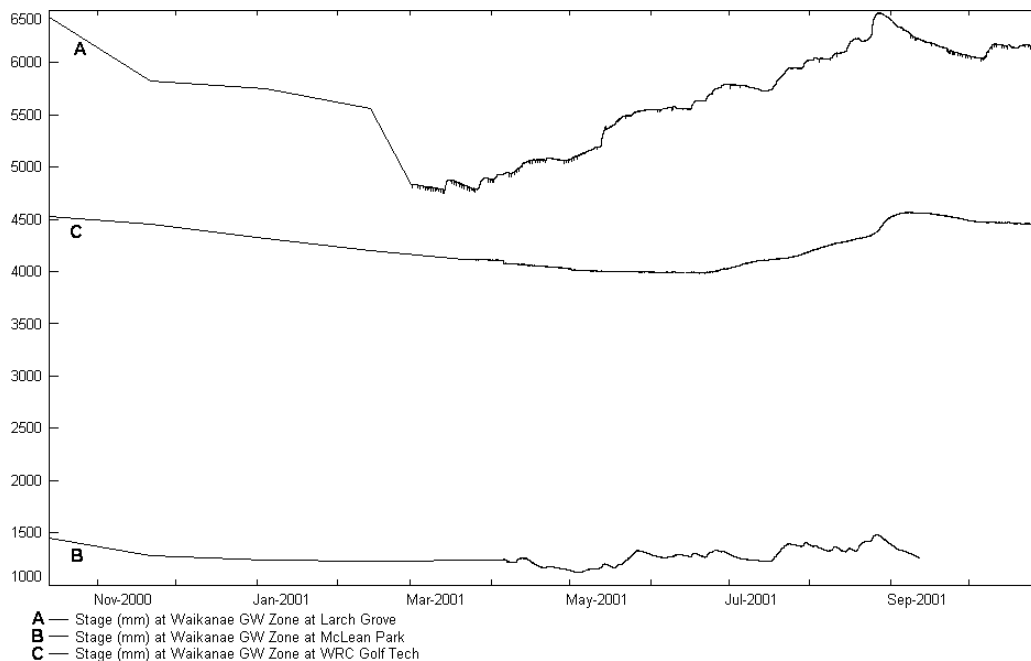
### Hautere Plain at Centrepoint



### *Raumati-Paraparaumu Shallow Groundwater*

We have been monitoring the shallow groundwater in Raumati-Paraparaumu since last summer after concerns arose about the overuse of this resource.

The following Figure shows that groundwater levels in the Paraparaumu shallow groundwater system have recovered since May 2001 to values that were recorded prior to the 2000/2001 summer. This recovery will be invaluable as the summer garden irrigation season approaches.



## 2.2 Rainfall and River Flows

The Department monitors rainfall and river flows at 44 sites throughout the western Region. The Regional Freshwater Plan sets minimum flow levels and step down levels for many of the Region's rivers. When these critical levels are reached, various controls are implemented.

September was a very dry month and rainfall totals across the Region were remarkably low. Only 8 mm of rain fell in the Mangaroa Valley in September, representing just 7% of the average September rainfall. In the 21 years of recording rainfall at this site there has only been one month with lower rainfall (February 1990). Apart from in the Tararua Ranges, no other rainfall site recorded a total over 25% of the monthly average. Totals of 18mm for Wellington, 13mm in Lower Hutt, 15mm in Wainuiomata, and 20mm on the Kapiti Coast typify the dry month.

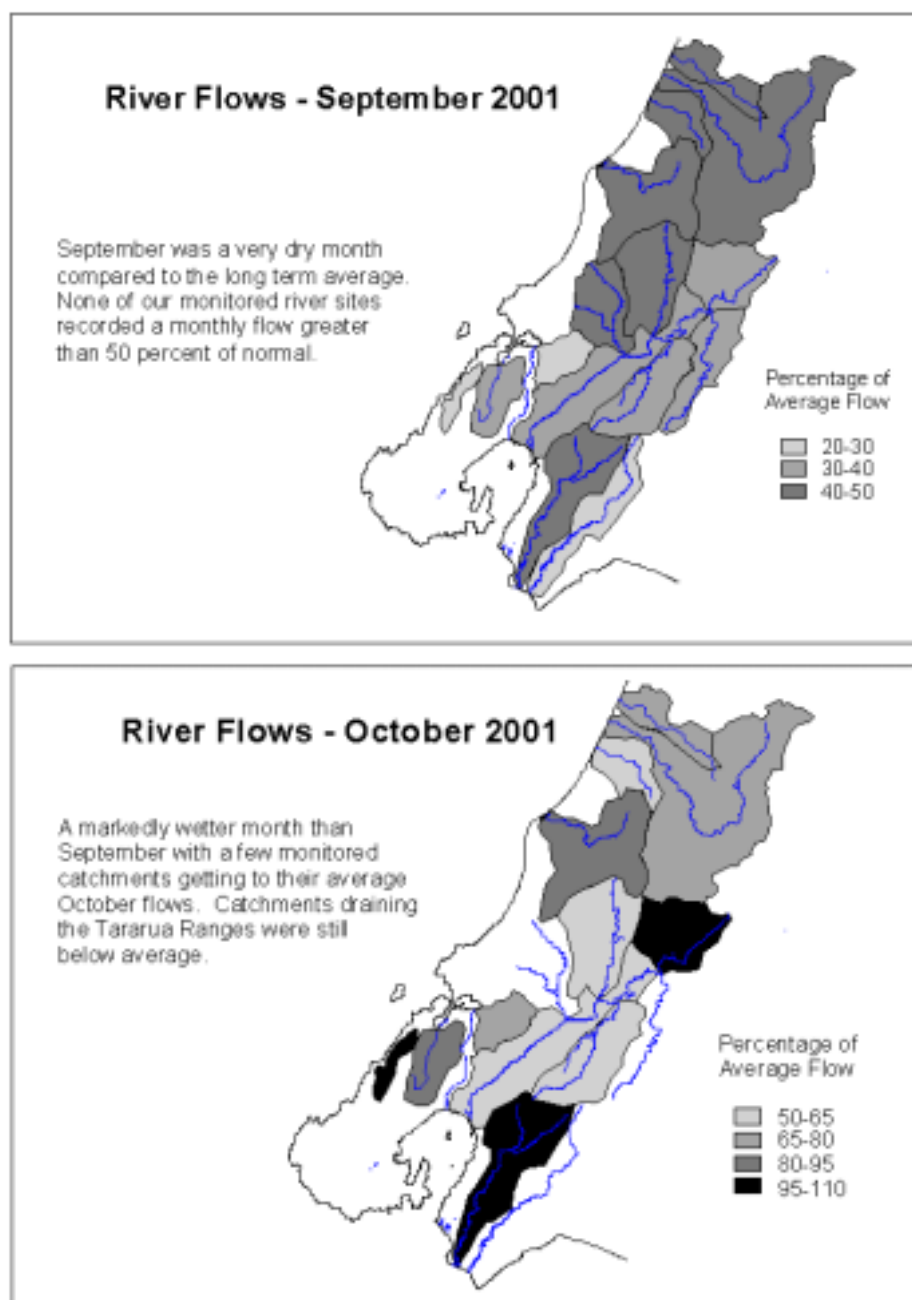
The effect of the low rainfall was very noticeable in the rivers and streams of the Region. None of our monitored sites recorded a monthly average flow that was above 50% of the long-term average. The Hutt River, Mangaroa River, Porirua Stream, Pauatahanui Stream, and Mill Creek were the worst affected. All had less than a third of their normal September flow.

October brought a lot more rain to the Region. The first week looked to be a continuation of the September dry conditions but then the southerlies and the rain came. Wellington, Hutt Valley, Wainuiomata and Otaki all received rainfall at least 1.5 times their October average. Wainuiomata was deluged with 324mm – twice the

average and 21 times more than what fell in September. Interestingly, as a result of the dominating southerlies the Tararua Ranges recorded below average rainfall in October.

River flows in October were higher than those experienced in September (many had twice the flow) but flows in only two monitored rivers (Wainuiomata and Mill Creek) reached average flows for the month. A combination of lower than average rainfall in the ranges (resulting in the main rivers being lower than normal) and the preceding dry soil conditions (that soaked up a lot of the rainfall before it entered the rivers) contributed to this.

The following Figure summarises the state of the river flows during September and October.



## 2.3 Air Quality Monitoring

### 2.3.1 Ambient Air Quality Monitoring

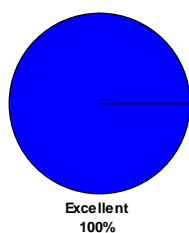
We currently monitor ambient air quality at two sites in Lower Hutt (Birch Street Reserve) and Upper Hutt (Trentham Fire Station). A full report on Air Quality Monitoring undertaken over the past year is reported separately

The graphs below summarise air quality at these location when the monitoring results are compared to ambient air quality guidelines. The assessment categories are as follows:

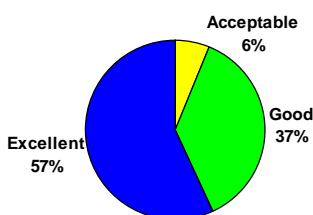
Category	Maximum Measured Value	Comment
Action	Exceeds Guideline	Completely unacceptable by national and international standards.
Alert	Between 66% and 100% of the guideline	A warning level which can lead to guidelines being exceeded if trends are not curbed.
Acceptable	Between 33% and 66% of the guideline	A broad category, where maximum values might be of concern in some sensitive locations, but are generally at a level that does not warrant dramatic action.
Good	Between 10% and 33% of the guideline	Peak measurements in this range are unlikely to affect air quality.
Excellent	Less than 10% of the guideline	Of little concern.

### Results for the Past Six Weeks at Upper Hutt

8-Hour Average CO at Upper Hutt



24-Hour Average NO<sub>2</sub> at Upper Hutt

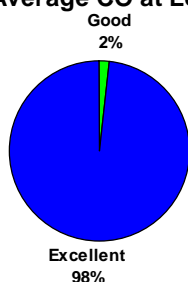


24-Hour Average PM<sub>10</sub> at Upper Hutt

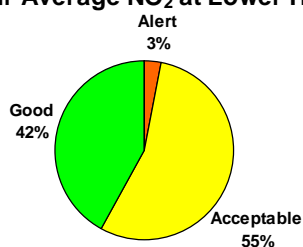


### Results for the Past Six Weeks at Lower Hutt

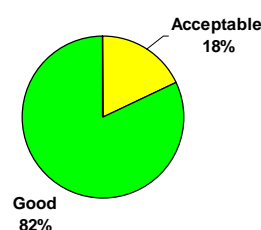
8-Hour Average CO at Lower Hutt



24-Hour Average NO<sub>2</sub> at Lower Hutt



24-Hour Average PM<sub>10</sub> at Lower Hutt



### 2.3.2 *New Monitoring Facilities in the Wairarapa*

We are currently in negotiations to establish a permanent meteorological station, and next year an ambient air quality station, at Wairarapa College. Previous monitoring in Masterton has shown that air quality is an issue at certain times of the year and under certain meteorological situations. The major problems arise from the use of domestic fires. The new monitoring facilities will provide us with a better understanding of the issue and, in time, will help us to determine measures to ensure that good air quality is maintained in this area.

Part of the agreement with Wairarapa College is that we will provide them with data from the stations to be used for their educational purposes.

We are currently discussing the proposal with affected neighbours adjacent to the College.

### 2.4 **Contact Recreation Monitoring Programme**

The officially recognised bathing season commenced on 1 November 2001 and runs till the end of March 2002. The Council works with territorial authorities throughout the Region to ensure that water quality at beaches commonly used for bathing is monitored during this period to assess their suitability for bathing.

In previous years the focus of this programme in the western Region has solely been on coastal waters. This year we have commenced a freshwater contact recreation monitoring programme. This involves monitoring in the Hutt, Pakuratahi, Waikanae and Otaki Rivers.

We are currently developing a web page which will provide the public with direct access to these monitoring results and a brochure which explains how and why we undertake this monitoring.

## 3. **Resource Quality**

Our Resource Quality team provide a pollution response service to the western Region. They are also involved in monitoring compliance for non-consented activities, and waste management and contaminated sites issues. This year we are implementing the Council's new pollution prevention programme *Take Charge*.

### 3.1 **Pollution and Non-compliance Complaints**

A summary of pollution complaints, our performance in responding to them and enforcement action taken is reported separately.

### 3.2 **Take Charge Implementation**

*Take Charge*, our pollution prevention programme, will be implemented during November. The programme involves the Council's pollution response staff visiting small to medium size businesses and, using the *Take Charge* resource kit, helping

them to conduct an environmental audit of their facilities. The initial focus is on drainage, site storage, spills and maintenance. It is hoped that in time the programme will expand to include energy efficiency, cleaner production and waste minimisation.

*Take Charge* will begin to be implemented in the Seaview / Gracefield area. Staff have developed an inventory of businesses in this area and will start by visiting those businesses involved in activities which pose the greatest risk to the environment.

Regular reports on the progress of *Take Charge* will be presented to the Committee.

### 3.3 **Agent Orange Investigation**

An investigation was recently undertaken in the Hutt Valley after we received reports alleging that Agent Orange had been dumped at two landfills. Initial sampling for 2,4-D and 2,4,5-T, the constituents of Agent Orange, at Wingate Tip and Cottles Pit showed no evidence of these chemicals being present.

Additional samples were taken at both of these sites and tested for dioxins. The results from Cottles Pit showed that no dioxins were currently be discharged from the tip, but high levels in sediment show that discharges have occurred in the past. The dioxins present were not the type which is typically found in residues of 2,4,5-T which helps to dispel allegations that Agent Orange was dumped at this site. Further investigations to determine the source, degree and extent of dioxin contamination below Cottles Pit are being undertaken.

Dioxins were detected in leachate coming from Wingate Tip. The levels of contamination were of an order typically found in landfill leachate (according to a recent Ministry for the Environment publication). A concern at Wingate is that some of the leachate discharges into the stormwater system. We are working with Hutt City Council to rectify this situation.

### 3.4 **Radioactive Waste**

We have also received information alleging that radioactive waste was disposed of at the former DSIR Soil Bureau site at Taita. Our investigations to date have revealed that low level radioactive carbon and phosphorus was used in various experiments undertaken on this site in the past. These materials have very low level of radiation and rapid rates of decay. Given that the site has not been used for nearly 20 years we believe that there is little risk posed by this site.

### 3.5 **Mangapouri Stream**

For sometime now we have been trying to identify the source of faecal contamination in Mangapouri Stream in Otaki. Despite extensive investigation by both our staff and staff from Kapiti Coast District Council we have not been able to locate the source of this contamination. We undertook another sampling run along Mangapouri Stream in early November to see if the contamination situation had changed over the winter months. The results are not yet available at the time of writing but will be presented at the Committee meeting.

### 3.6 **Hazardous Substance Exercise**

Pollution Response staff were involved in a major exercise which was held on 8 November as part of a Hazardous Substances Conference. The exercise proved to be an invaluable learning opportunity for our staff.



# **Consents Management Department Report**

## **Paula Bullock, Manager**

**November 2001**

### **1. Consent Statistics**

We have received 117 consents to date this year. This compares with 151 consents received for the same period last year.

### **2. Appeals**

The boatshed appeals are now likely to be heard early in the New Year.

We have received an appeal on the State Highway 58 Haywards consents from Haywards Action Group.

### **3. Compliance**

#### **3.1 General**

The Consents Management Department has experienced a significant increase in the number of complaints we are receiving about consented activities. While a considerable amount of the complaints relate to one particular asphalt plant in Tawa, the time and resources spent responding to the complaints is significant. During the 1999/2000 financial year we logged 137 complaints and in the 2000/2001 financial year we logged 468.

#### **3.2 Abatement Notices**

There have been no abatement notices issued this financial year.

#### **3.3 Infringement Notices**

Roadex (formerly MKL and CEH) has requested a hearing for the six infringement notices it was issued for offensive odour beyond their boundary. We have a call over on 28 November 2001 when it is likely a hearing date will be set.

#### **3.4 Prosecution and Enforcement Orders**

##### ***Roadex***

Responding to complaints from Roadex continues to consume an immense amount of staff time, both in and out of office hours. Roadex is an asphalt plant in Porirua City and in northerly wind conditions odour from the operation is carried to nearby residential houses.

At the last committee meeting, I reported that a pre hearing Environment Court conference for an interim enforcement order (seeking to limit Roadex's operation in certain wind conditions, install the carbon filters, and notify us when they are testing the carbon filters in northerly wind conditions) was not totally successful. The Judge did not want to hear our application because it would have effectively closed the plant down for six weeks until the mitigation measures were put in place. However, the Judge did give us the right to submit a progress report at the beginning of October and adjourned the matter until the end of October.

On 1 October 2001 we filed a memorandum with the court outlining the complaints we had received and the number of incidents we had confirmed as being a breach of consent condition since the pre hearing conference in September. On 25 October 2001, the Judge held a telephone conference with all parties and set a court date of 20 November 2001 to hear the enforcement order.

On 20 November 2001 the Environment Court heard our enforcement order. After much consideration, we sought an order seeking to close the plant until they installed further odour mitigation measures. We also asked the Court to change Roadex's odour related condition of consent to make it more stringent.

The Environment Court, after hearing all the evidence, granted an enforcement order that stopped the plant operating between the hours of 8pm and 7am until they installed a carbon filter to mitigate the odours. The Court did not grant our request to make the odour condition more stringent. The Judge did, however tell the Roadex, that should the carbon filter option not resolve the problem, the Court was not likely to tolerate any further discharges.

What does it all mean for us?

- The plant cannot operate at night until the carbon filter is installed, therefore we will not be required to respond to complaints at 1am or 2 am in the morning.
- During the day, if there is odour and we receive complaints, we will investigate.
- If we confirm an offensive odour during this time, we are able to prosecute or issue infringement notices.
- We hope the carbon filter works! If it does not we will need to go back before the Court seeking another enforcement order.

### ***Burrell Demolition***

Burrell Demolition gained the leave of the High Court to appeal the High Court's declaration decision. I have laid further charges against Burrell Demolition, C & D Landfills, Alex Burrell and John Morgan for continued breaches of resource consent.

### ***Horokiwi Quarries***

We are seeking to prosecute Horokiwi Quarries for an unauthorised discharge of silt in to the Horokiwi Stream and Wellington Harbour. The charges were laid on 24 August 2001. We had hoped that Horokiwi Quarries would enter a plea at call over in

October, however, they indicated they were not in a position to enter a plea, but would do so at the next call over in November.

#### 4. **Other**

##### 4.1 **Staffing**

I am regret to inform the committee that Peter Day has resigned from the Consents Management Department. Peter's skills and knowledge that he brought to the Department will be sorely missed. I wish Peter all the best for his new job at the Auckland Regional Council.

On a more positive note I welcome Harley O'Hagan to the Department. Harley has a degree in Technology (Environmental Engineering) and previously worked in the Engineer Consultancy Group of the Utility Services Division.

Applicant	Proposal	Date Consent Lodged	Date Submissions Closed	Number of Submissions Received	Pre-hearing Held	Hearing Held	Hearing Committee Members	Date Decision Released	Granted or Declined
Lambton Harbour Management <sup>1</sup>	Consents associated with the development of the Taranaki Street Wharf and Lagoon area	09/04/99	21/05/99	77		04/08/99 05/08/99 06/08/99	Councillor Buchanan, Tony Town (Commissioner)	06/09/99	Granted with conditions now under appeal
GNB Technologies	Discharge to air of contaminants arising from a battery recycling facility	01/03/00	19/04/00	20	10/05/00	<b>24/09/01</b>	<b>Ian Buchanan, Terry McDavitt, Jim Allen, Liz Mellish</b>	<b>11/10/01</b>	<b>Granted – no appeals within appeal period</b>
M Goddard	Overnight stays in boatshed	11/05/00	19/07/00	133	N/A	21/08/00 – 23/08/00	Councillors Buchanan, Gibson and McDavitt	20/09/00	Declined now under appeal. Tentative Court date <b>early next year.</b>
B and S Pidford	Overnight stays in boatshed	31/05/00	19/07/00	133	N/A	21/08/00 – 23/08/00	Councillors Buchanan, Gibson and McDavitt	20/09/00	Declined now under appeal. Tentative Court date <b>early next year.</b>
M Ambrose	Overnight stays in boatshed	02/06/00	19/07/00	134	N/A	21/08/00 – 23/08/00	Councillors Buchanan, Gibson and McDavitt	20/09/00	Declined now under appeal. Tentative Court date <b>early next year.</b>
M Ambrose	Consents associated with the construction of a new boatshed	02/06/00	19/07/00	139	N/A	21/08/00 – 23/08/00	Councillors Buchanan, Gibson and McDavitt	20/09/00	Declined <b>Settled by Consent Order</b>

Applicant	Proposal	Date Consent Lodged	Date Submissions Closed	Number of Submissions Received	Pre-hearing Held	Hearing Held	Hearing Committee Members	Date Decision Released	Granted or Declined
L Ramsey	Overnight stays in boatshed	02/06/00	19/07/00	133	N/A	21/08/00 – 23/08/00	Councillors Buchanan, Gibson and McDavitt	20/09/00	Declined now under appeal. Tentative Court date <b>early next year.</b>
A and N Johns	Overnight stays in boatshed	06/06/00	19/07/00	134	N/A	21/08/00 – 23/08/00	Councillors Buchanan, Gibson and McDavitt	20/09/00	Declined now under appeal. Tentative Court date <b>early next year.</b>
O and K Martin	Residential use of boatshed	06/06/00	19/07/00	162	N/A	21/08/00 – 23/08/00	Councillors Buchanan, Gibson and McDavitt	20/09/00	Declined now under appeal. Tentative Court date <b>early next year.</b>
R and P Lewis	Residential use of boatshed	06/06/00	19/07/00	139	N/A	21/08/00 – 23/08/00	Councillors Buchanan, Gibson and McDavitt	20/09/00	Declined <b>Appeal withdrawn.</b>
C Feast	Overnight stays in boatshed	06/06/00	19/07/00	134	N/A	21/08/00 – 23/08/00	Councillors Buchanan, Gibson and McDavitt	20/09/00	Declined now under appeal. Tentative Court date <b>early next year.</b>

Applicant	Proposal	Date Consent Lodged	Date Submissions Closed	Number of Submissions Received	Pre-hearing Held	Hearing Held	Hearing Committee Members	Date Decision Released	Granted or Declined
New Zealand Galvanising	Discharge to air for contaminants from a hot dip galvanising process and associated activities.	24/07/00	29/08/00	4	08/09/00	Application on hold to allow for ambient air monitoring to be undertaken.			
Transit <sup>2</sup>	Consents associated with the construction of an interchange at the intersection of State Highway 2 and 58.	07/11/00	19/01/01	99	N/A	27/06/01 – 16/07/01 <b>Reconvened on 01/08/01-02/08/01 and 27/08/01</b>	Commissioners Helen Tobin, Russell Howie and Richard Fowler	<b>12/10/01</b>	<b>Granted – 1 appeal received</b>
Transit <sup>2</sup>	Consents associated with the realignment of State Highway 58	07/11/00	19/01/01	99		27/06/01 – 16/07/01 <b>Reconvened on 01/08/01-02/08/01 and 27/08/01</b>	Commissioners Helen Tobin, Russell Howie and Richard Fowler	<b>12/10/01</b>	<b>Granted – 1 appeal received</b>
Kapiti Coast District Council <sup>3</sup>	Consents associated with taking water from the Otaki River for supplementary public water supply.	04/12/00	12/03/01	115	22/05/01	16/07/01 – 20/07/01 Hearing due to be reconvened on 02/08/01	Commissioners Christine Foster, Alistair Aburn and Te Akapikirangi Arthur	<b>4/9/01</b>	<b>Declined – no appeals within appeal period.</b>
Wellington City Council	Change of consent monitoring conditions for the Moa Point Pump Station	02/11/00	08/12/00	2		On hold for further information in relation to monitoring requirements			

Applicant	Proposal	Date Consent Lodged	Date Submissions Closed	Number of Submissions Received	Pre-hearing Held	Hearing Held	Hearing Committee Members	Date Decision Released	Granted or Declined
Wellington City Council	Renewal of discharge of milliscreened effluent to the coast during wet weather events, Western Wastewater Treatment Plant	20/12/00	05/03/01	9	17/05/01	8/10/01 9/10/01	<u>Ian Buchanan</u> Ian Stewart	26/10/01	Granted - Still within appeal period
Transit <sup>4</sup>	Upgrade of State Highway 2 from Dowse Drive to Petone	30/03/01	29/05/01	100+		1/10/01 – 9/10/01	Helen Tobin, Richard Fowler, Barry Butcher, Miria Pomare		
Transit <sup>3</sup>	Realignment and safety improvements to McKays Crossing	20/07/01	6/9/01	17	9/10/01	Scheduled for 27/11/01, 28/11/01	David Hutchinson, Miria Pomare, Helen Tobin		
BP Oil NZ Ltd	To change the use of an existing pipeline by resting it on petroleum product instead of seawater between shipments	20/7/01	16/10/01	17					
<u>John Gabites</u>	Discharge to air from Piggery and other land use consents.	25/09/01	01/11/01	7	12/11/01				
Sink F69 Charitable Trust	To create an artificial reef by sinking the former HMNZS Wellington	3/10/01	3/12/01						
Wellington City Council <sup>1</sup>	Oriental Bay Enhancement Project	23/8/01	22/11/01						
<u>Transit</u>	Kaitoke Hill upgrade	20/7/01	12/12/01						

1 These applications were heard jointly with Wellington City Council

2 These applications will be heard jointly with Hutt City Council, Porirua City Council and Upper Hutt City Council

3 These applications were heard jointly with Kapiti Coast District Council

4 These applications will be heard jointly with Hutt City Council

# Harbours Department Report

## Mike Pryce, Manager

November 2001

### 1. Harbour Navigation Aids

All navigation aids are operating satisfactorily.

A new diesel generator was installed in the Rear Lead Light on 17 October. This is a back-up to charge the storage batteries in prolonged periods of bad weather in winter when the solar panels may be unable to provide an adequate charge.

### 2. Oil Pollution Response

- Four oil pollution reports were received. None required any clean-up action.
- Two replacement trailers for carrying floating oil booms were acquired.

### 3. Departmental Activities

On 5th November the annual fireworks display from the barge moored in the middle of Lambton Harbour passed off without incident. It is pleasing to report that the large numbers of boats out on the harbour were extremely well behaved, with no untoward incidents reported before or after this popular event.

On 8th November staff participated in an emergency services exercise held on the wharf outside Te Papa as part of a three-day conference. Dispersant-spraying equipment was rigged and operated on board the Centreport tug *Toia*, which also displayed its fire-fighting capabilities.

On 10 and 18 November, staff held training courses for new Honorary Enforcement Officers.

On 16 November Harbour Ranger Grant Nalder gave a presentation to Wellington City Council Beach Wardens to explain our role in harbour management in order to encourage greater co-operation and use of volunteer resources.

### 4. Staff

Two temporary harbour rangers, Oliver Muller and Sally Barnett, have been employed to assist the Department during the three-month summer period. They will form an important role in our continuing education and information programme.



# **Emergency Management Department Report**

## **Rian van Schalkwyk, Manager**

**November 2001**

### **1. Project Phoenix**

Project Phoenix is a joint project between Auckland and Wellington. It involves all the regional and local Councils, emergency services, health providers, and many other response agencies.

The project aims to determine how Auckland can assist the Wellington Region to recover from a large earthquake. The main focus is on what logistical support Wellington needs and whether this can be provided by Auckland.

The project began in 1998 with Phoenix I. This phase of the project explored what resources Auckland had to offer the Wellington Region. The next phase of the project is Phoenix II, which is currently underway. Phoenix II is a needs analysis of Wellington's logistics requirements. The project will culminate with Phoenix III on 23-25 July 2002. Phoenix III will be an exercise to reality test the planning that has been conducted in Wellington and Auckland.

The planning process is the most important part of Project Phoenix. The benefit of the project will be realised through assessing the ability of key agencies to respond, determining shortfalls in resources, and developing plans to address these deficiencies.

The scenario used for the project is a large earthquake on the Wellington faultline (Richter Magnitude 7.8). The effects will be felt from Manawatu through to Marlborough. There will be hundreds of deaths, thousands of injuries and tens of thousands of people displaced from their homes.

Planning for the logistic needs for this entire event in one project would be overwhelming, so the focus of the project has been deliberately limited to the most pressing immediate tasks:

- Urban Search and Rescue
- Treatment and movement of the injured
- Provision of potable water

Phoenix II will identify the needs of the Wellington Region and in Phoenix III Auckland will exercise how they will respond to those needs. For Auckland this may involve tasks such as hosting and processing international aid, mobilising search and rescue teams, and co-ordinating aid from within New Zealand.

In addition central government involvement from the Ministry of Health, the Ministry of Civil Defence and Emergency Management and the Defence Force has been secured.

## 1.1 Outcomes

It is hoped that at the conclusion of Project Phoenix, plans will be in place for mutual disaster assistance between the Wellington and Auckland regions. It is also hoped that similar arrangements can be made between other parts of the country that have similar vulnerabilities, or similar resources that could be of assistance to others.

Developments include dedicated meetings and workshops that were held in October 2001 with:

- Wairarapa role-players on 9 October (42 people from all organisations with a role and responsibility in emergency management);
- Castle Point/Riversdale community on 16 October (14 people attended);
- Executives of the Medical fraternity on 26 October (23 people from the DHB's, Public Health, Red Cross, Ministry of Health, Ambulance);
- Executives of New Zealand Police on 29 October (Head Office and all districts were represented); and
- Executives of the Fire Services on 29 October (Head Office and all districts were represented).

Discussions were mainly about evaluation strategies, lead agencies, operational matters, dependencies on infrastructure and contractors, public expectations and confidence builders or breakers and external resources that will be needed immediately. Each workshop was ended after valuable brain storming sessions.

A great number of people within various organisations have already contributed significantly to the planning processes of Project Phoenix. We are meeting on a regular basis and we are confident that Project Phoenix will be a great success and that the process that is being applied will be recognised as a tool to be used to address the unique issues facing other parts of New Zealand.

## 2. **Wellington Engineering Lifelines/WRC Earthquake Response Exercise - 31 October 2001**

The exercise (using the "Phoenix"-scenario) was developed in order to assist the utility organisations in the Wellington metropolitan area (WRC Water Group, Wellington City Council, Hutt City Council, Upper Hutt City Council, Porirua City Council, Transit NZ, United Networks, Natural Gas Corporation, Telecom NZ, Vodafone) and the Emergency Management Departments of the local authorities with preparedness for a regional scale emergency. The Ministry of CDEM and the IGNS also participated as observers.

The purpose and objectives of the exercise were to:

- reality test the proposed Lifeline Co-ordination System procedures (our role at the WRC);
- enable participating utility organisations to test their readiness and the effectiveness of their response procedures; and

- enable all parties involved focusing on post-earthquake communications issues.

The focus of the exercise was on communications and information management processes during the initial response phase.

In preparing for the exercise the Emergency Management Department was actively involved with the development process and, in that regard, several exercise planning meetings (on 2, 15, 19, 26 and 30 October 2001) were attended.

John Allard, Dave Watson and Wayne Hastie were the Regional Controllers, the Emergency Management Officer had the role as HQ Manager and the Manager, Emergency Management, had the role of Exercise Co-ordinator.

### 3. **Communications**

Weekly tests of the communications network are still being carried out. The system is functioning well and no problems have been experienced. The entire system was thoroughly exercised on the 31 October 2001.

## 4. **Activities**

### 4.1 **WeLG International workshop**

- The International Lifelines Workshop took place at Te Papa from 15 to 17 October 2001. The workshop highlighted the close relationship between utility operators and emergency management in disasters. A lot of mention was made about Project Phoenix. The five overseas speakers were very impressed with the good working relationships in our region.

### 4.2 **Interaction with other groups**

- Attended the meeting of the NZ Society of Earthquake Engineers on 25 October. Discussions were about key immediate post-earthquake roles for engineers, urban search and rescue, co-ordination of the emergency response process, post-earthquake building safety evaluations and priority response agreements.
- Attended several discussions with representatives of the Ministry of Civil Defence and Emergency Management (MCDEM) on Civil Defence Plans, Emergency Management Strategy, and a Natural Hazards Conference planned for August 2002.

### 4.3 **Exercises**

The Department participated in the following exercises:

- Wellington Engineering Lifelines Group - 31 October 2001;
- Hazardous Substances Exercise, Taranaki Wharf - 8 November 2001; and
- Porirua City Council - 9 November 2001

#### 4.4 **Emergency Services Co-ordinating Committee Meetings**

We attended the Kapiti Coast (4 October and 1 November 2001), the Hutt Valley (16 October 2001), Wairarapa (14 November 2001) and Wellington (27 November 2001) Emergency Services Co-ordinating Committee meetings. Apart from Phoenix, we also discussed the issues regarding the Paraparaumu Golf tournament (with Tiger Woods) in January 2002. Between 20-30,000 people per day are expected in Paraparaumu during that week. Difficulties with traffic, food poisoning, sewage and portaloos, air traffic, injuries, and sabotage may be experienced.

#### 4.5 **Rural Fire**

We attended the Wellington Region Rural Fire Committee meeting in Kapiti on 6 November 2001 and discussed the preparations for the next fire season, fire planning, training, incident management teams and publicity.

#### 4.6 **Region Emergency Managers' Meeting**

The Emergency Managers' meeting took place at the Beehive on 19 November 2001. Main topics of discussion were the new CDEM Bill, CDEMG Planning and Strategies and Project Phoenix. The Managers also attended a workshop on Urban Search and Rescue which was presented by the Ministry of Civil Defence and Emergency Management.

### 5. **General**

#### 5.1 **Earthquake Report**

Since the last report, 45 earthquakes bigger than 3.0 on the Richter Scale occurred in the country. The following Earthquake Reports for the Wellington Region (and reports of earthquakes felt in Wellington) were received from IGNS.

<b>2001 Nov 9 5:56 p.m.</b>	mag. 5.3 ( 96 km deep)	<i>30 km south of Nelson</i>
<b>2001 Nov 2 6:06 p.m.</b>	mag. 5.0 ( 35 km deep)	<i>20 km north-west of Wellington</i>
<b>2001 Oct 15 4:49 p.m.</b>	mag. 5.8 ( 66 km deep)	<i>10 km south-west of Hastings</i>
<b>2001 Oct 9 8:27 a.m.</b>	mag. 4.6 ( 12 km deep)	<i>40 km north-west of Porirua</i>
<b>2001 Oct 8 9:12 p.m.</b>	mag. 3.3 ( 27 km deep)	<i>10 km west of Wellington</i>

#### 5.2 **Special Weather Bulletins**

Since the previous report, no Special Weather Bulletins (SWBs) were received.

## Richard Waddy. Divisional Accountant

### Financial Position : 30 October 2001

#### 1. Operating Results

Environment Division  
Summary Income Statement  
For the Period Ended 31 October 2001

We are pleased to report the operating results for the four month period ended 31 October 2001.

	Year to Date			Full Year
	<u>Actual</u> \$000s	<u>Budget</u> \$000s	<u>Variance</u> \$000s	<u>Budget</u> \$000s
Rates	2,280.8	2,280.8	--	6,842.5
Other Revenue	765.9	613.4	152.5 F	1,894.2
<b>Total Revenue</b>	<b>3,046.7</b>	<b>2,894.2</b>	<b>152.5 F</b>	<b>8,736.7</b>
<b>Less:</b>				
Direct Expenditure	2,495.7	2,547.6	51.9 F	8,068.9
Indirect Expenditure	268.8	309.8	41.0 F	949.6
<b>Total Operating Expenditure</b>	<b>2,764.5</b>	<b>2,857.4</b>	<b>92.9 U</b>	<b>9,018.5</b>
<b>Operating Surplus (Deficit)</b>	<b>282.2</b>	<b>36.8</b>	<b>245.4 F</b>	<b>(281.8)</b>

#### 2. Operating Surplus

Overall the Division's finances are satisfactory. For the period, an operating surplus of \$282,000 was posted. The result is considerably higher than the budget which provides for a smaller surplus of \$37,000.

The result translates to a net favourable variance of \$245,000 and comprises increased revenue of \$152,000, and reduced expenditure \$93,000.

### 3. Revenue

Total Revenue at \$3,047,000 was \$152,000 above our budget target of \$2,894,000. The increased revenue is from the notified consent, Otaki Pipeline Project (\$60,000). In addition, we have passed on the costs of disposal of the hulk of "*Sarfaq*" (\$32,000) to the vessel owners. With respect to the latter we consider that the likelihood of recovering any costs from the vessel owners, Carp Investments Limited to be remote. The Official Assignee has placed the Company in liquidation and early indications suggest that there will be negligible funds available to creditors from this action.

During the period the annual resource management charges were processed. In total, these raised revenues of \$225,000 (last year \$200,000).

### 4. Total Expenditure

The Division finds itself in its customary position with total expenditure of \$2,765,00, which is some \$92,000 (or 3.4 %) below budget.

The main reasons for this variance are:

- Personnel costs are presently under budget by \$19,000. Staff movements in the period caused the under-spend.
- Material costs are slightly over budget by \$12,000. Commissioners' costs from the Otaki Pipeline hearing makeup most of this variance. These costs are fully recoverable from the applicant.
- External Contractors and Consultants are \$40,000 under budget. The level of expenditure on iwi projects has increased significantly with the 'administrative assistance' payments (total budget \$105,000) being made during the period. So far five of the seven iwi have taken up these funds. However, in total, the iwi budget trails by some \$78,000 behind our expected expenditure level.

The "*Sarfaq*" costs that resulted from the clean-up and subsequent disposal exercise (\$19,000) are also included in this category.

- The Bad Debts and Provision for Bad Debts includes a favourable contribution of \$21,000. A slow payer, Telstra Saturn, paid their outstanding bill (\$22,300) almost immediately after the close of the financial year.

### 5. Capital Expenditure

The Capital Expenditure is behind budget by \$46,000 (including proceeds from disposals). The shortfall is mainly with the delay in the purchase of a replacement motor vehicle. The vehicle sought was not immediately available.