

Regional Policy Statement Implementation Report

Geoff Skene, Manager

February 2002

1. **Take Care – Community Environmental Care Programme (Nigel Clarke and others)**

Each of the seven new groups being supported by the Council from this year has begun its work, with support from Council officers, and the existing groups remain active. Nigel has also organised a workshop series for care group members and the first of these, on weeds, has been held. Others on animal pests, community nurseries, and communicating through the media are to be held over the next three months.

2. **Take Action (Jo Campbell; Richard Morgan; Olwen Narbey; Jo Fagan)**

Work is continuing on the development of the travelling road show for school children. As explained in my update report on the Ecobus (elsewhere in this Order Paper), we are developing a dramatic multi-media presentation to excite the children about the *Take Action for Water* programme. After developing the script and learning objectives through December, most of the filming for the presentation was completed in January. Additional art work and set construction is now underway. One or two schools starting the programme this term will see the presentation later in the course of their work.

This year's first group of schools started the programme on February 1st. In addition, six schools, including Silverstream, Brooklyn, Raumati Beach, and Kenakena, are doing the programme this term on their own. Each has 5-6 classes, and our contribution is advice and the lending of equipment to do water testing. We continue to receive very encouraging feedback from the schools we are assisting in both the guided and unguided formats. One school has requested a place already in 2003.

The official launch of the programme will take place on Friday 22nd March at the Stratton Street entrance to Belmont Regional Park. Over the past four months, work has been underway on the construction of a teaching space, which is attached to the wool shed at the park. The programme will be launched there by the Minister for the Environment, the Hon. Marion Hobbs, and all councillors are invited to attend. Details will be in the Councillors' Information Bulletin. We have chosen March 22nd because it is "World Water Day".

3. **Environmental Education Conference (Geoff Skene)**

The first New Zealand environmental education conference was held in January in Hamilton. This was very well attended, with a lot of teachers and local authority representatives present. The Regional Council supported two teachers from our Region to attend. I was impressed by the enthusiasm of the teaching professionals who were there and their need for local support to build environmental education in schools. We have always made promoting environmental education amongst teachers part of our role and we shall be looking at how we can do this more comprehensively as the Take Action for Water programme beds down.

4. **Waiwhetu Stream, Pauatahanui Inlet (Tim Porteous)**

An update on progress with these projects can be found elsewhere in this Order Paper.

5. **Biodiversity Help for Landowners (Tim Porteous)**

At the last LTFS Councillors placed considerable emphasis on the need to connect with private landowners in the delivery of Council's biodiversity programme. This is being given effect to in a number of ways: the Key Native Ecosystem work of the Biosecurity Department helps landowners with high quality habitat on their land, and the private land protection programme (see the report in this Order Paper) for bush and wetland that can be covenanted is also going well.

We are also developing a range of services for landowners who may not have habitat of the highest quality to manage, but nonetheless want advice and assistance with a patch of bush or similar. Tim has produced a brochure (called 'Need a Hand?') about the WRC's private land protection and soil conservation programmes, and he is working on another which describes the nature conservation services of a range of agencies, including Fish and Game and the Department of Conservation, as well as the Council. We are still working out what services landowners need and how we can provide them and will report back to the Committee when this is finalised.

Resource Policy Department Report

Wayne Hastie, Manager

February 2002

1. Maintaining Regional Policies and Plans (Murray McLea)

Proposed regional plan changes were approved for public notification at the 13 December 2001 Policy and Finance Committee meeting. The changes follow a positive response from the consultation process for draft changes. The proposed changes include withdrawal of the Transitional Regional Plan, changes to bore rules on the Kapiti Coast, and other small changes to all the other Regional Plans except the Regional Coastal Plan. The changes are to be notified on 9 February 2002.

We are continuing discussions about changes to the port noise provisions in the Regional Coastal Plan. When preparing the Plan, the Council made a commitment to align noise standards with the adjacent territorial authority standards. One complicating factor is that the Resource Management Act 1991 requires us to deal with coastal occupation charges in the first change we make to the Regional Coastal Plan – we must either include a charging regime or say that we will not be having one.

Staff are preparing a briefing paper on occupation charges with a view to holding a workshop for Councillors.

2. Regional Plan Implementation

Silt Guidelines (Paul Denton)

Our consultant has completed his work on the new guidelines that are based on the Auckland Regional Council guidelines. Unfortunately we have found that some of the diagrams do not print well, and we are seeking better versions so we can take the guidelines to the next stage of consultation.

Freshwater Ecosystems (Murray McLea)

Work has begun by on a survey of freshwater fish at 70 sites in the Wellington Region.

A student has been employed for two months to prepare an inventory of structures for the western side of the Region. Work began in early January and good progress is being made. A focus of the work is on structures that are barriers to fish passage.

Copies of reports on completed work have now been printed and distributed to key interested groups. The reports on whitebait spawning surveys, a review of freshwater fisheries in the Region, and structures in the rivers of South Wairarapa are also on our internet site.

In December last year, Dr Ian Boothroyd presented information about freshwater ecosystems to staff at two workshops. The first presentation was to flood protection staff and the second to other interested staff. We will be following up Ian's presentations with further discussion with flood protection staff about how they can incorporate ecosystem-based management into their operations.

Marine protection (Paul Denton)

Our work with the Ministry for the Environment on this project has continued to progress and we have completed a project plan. The key task facing us now is to implement the plan, and we hope to make good progress over the next few months.

Wetland Recovery Programme (Melanie Dixon)

Two Key Native Ecosystem wetland projects are now underway:

- Te Harakeke Swamp in Waikanae; and
- Lake Pounui in the South Wairarapa.

A student has been employed (by Parks and Forests) on a temporary basis to update the Council's records on wetland extent.

Melanie led a guided walk through Queen Elizabeth Park looking at the park's unique ephemeral wetlands. A dozen hardy individuals braved the unseasonably wet and cold conditions to participate in the walk in early December.

3. Iwi matters (Keriana Wilcox)

The first Ara Tahi meeting for 2002 is to be held on 8 February. The agenda includes a report giving a summary of work completed in the calendar year 2001. This information will not be repeated here.

4. Hazards (Roz Groves)

We are seeking tenders for the provision of a management options paper in relation to tsunamis. The paper will identify possible management responses to tsunamis and make recommendations based on the level of knowledge and risk to the Wellington Region. Tenders close on 12 February.

A contract with NIWA has been signed to provide information on the meteorological hazards in the Region.

5. Aquaculture Review (Wayne Hastie)

Before Christmas the Government announced significant reforms to the way in which aquaculture is managed in New Zealand and introduced a two year moratorium on new aquaculture ventures. Although aquaculture is not a major activity in the Wellington Region at present, the reforms have the potential to have a significant

impact on the Council. Regional coastal plans will have to identify Aquaculture Management Areas (AMAs) with input from the Ministry of Fisheries. Space in AMAs will be tendered out by regional councils, and councils will have to consider the full range of impacts of marine farms on the environment. Currently councils cannot consider any impacts on fishing.

The two year moratorium is to be given effect through the Resource Management (Aquaculture Moratorium) Amendment Bill which has been introduced and referred to the Primary Production Committee for consideration and report back to the House. Submissions close on 8 February and staff are currently considering whether to make a submission. When enacted, it is proposed that the legislation will apply retrospectively so that the moratorium has effect from 28 November 2001.

A substantive bill to enact the main reforms is expected to be introduced in April.

6. **Marine Reserves Review (Wayne Hastie)**

Conservation Minister Sandra Lee has announced proposals for a Marine Reserves Bill 2002 to overhaul the Marine Reserves Act 1971. The key changes proposed are:

- To enable the preservation and protection of marine areas for the conservation of marine biodiversity. The current legislation only provides for the protection of marine areas for scientific study.
- To allow marine reserves to be established in the Exclusive Economic Zone. The current legislation restricts marine reserves to inside the 12 nautical mile limit.
- To streamline the process of applying for and approving reserves.
- To restrict the ministerial consent to that of the Minister of Conservation.

Ms Lee plans to introduce the Bill to Parliament this year.

Resource Investigations Department Report

John Sherriff, Manager

February 2002

1. Resource Information

1.1 Flood Warning

The Resource Investigations Department provides a flood warning and monitoring service for the western part of the Wellington Region. Rainfall and river level recorders around the Region automatically relay information to the Regional Council Centre. When specified rainfall intensities or river levels are reached the system automatically alerts staff who implement response procedures.

Special weather bulletins issued by the Meteorological Service provide forewarning of conditions which could lead to heavy rainfall and high river levels.

Since the last meeting of the Committee the following alarms was received and responded to:

13 November 2001	Rainfall: Warwicks, Kapakapanui,
14 November	Rainfall: Warwicks, Kapakapanui, Taungata, Transmission Lines River Level: Waitohu
22 November	Rainfall: Kapakapanui, Seton Nossiter, Wayne's Mistake, Warwicks, Tasman Vaccine Ltd, Orongorongo Swamp, Wainui Reservoir, McIntosh River Level: Porirua Town, Cemetery, Kaitoke, Pukehinau
3 December	Rainfall : Cemetery
4 December	Rainfall: Cemetery, Wainui Reservoir, Kapakapanui
5 December	Rainfall: Warwicks, McIntosh, Kapakapanui River Level: Kaitoke, Birchville, Cemetery
7 December	River Level: Waitohu
9 December	Rainfall: Orongorongo Swamp River Level: Mangaroa, Waitohu
10 December	Rainfall: Seton Nossiter Park
13 December	River Level: Pukehinau, Kaitoke
27 December	Rainfall: Transmission Lines' Warwicks, Taungata, Wainui Reservoir, Orongorongo Swamp River level: Pukehinau, Kaitoke, Porirua Town
10 January 2002	Rainfall: Regional Council Centre
12 January	Rainfall: Orongorongo Swamp, Cemetery
15 January	Rainfall: Kapakapanui, Transmission Lines River Level: Porirua Town

2. Resource Analysis

2.1 Groundwater Levels

The Department monitors groundwater levels at 46 sites around the western Region. We use two of these bores, McEwan Park at Petone and Hautere Plain on the Kapiti Coast, as general indicators of the state of groundwater resources in these areas.

Lower Hutt Groundwater Zone - Waiwhetu Artesian Aquifer

The Waiwhetu Artesian Aquifer has been in a very healthy state since September 2001. Mean daily artesian pressure measured at McEwan Park has been well above the long-term daily average for most of that time.

Kapiti Coast

Most groundwater level monitoring sites on the Kapiti Coast are showing a gradual recovery in level after record low levels mid last year. A relatively wet summer so far appears to have compensated for the reduced recharge that occurred during the winter of 2001.

2.2 Rainfall and River Flows

November & December

November and December were wet months. During November only the Tararua Ranges received around average rainfall, every other site received well above average rainfall. Rainfall in Wellington during November was nearly twice the amount normally received.

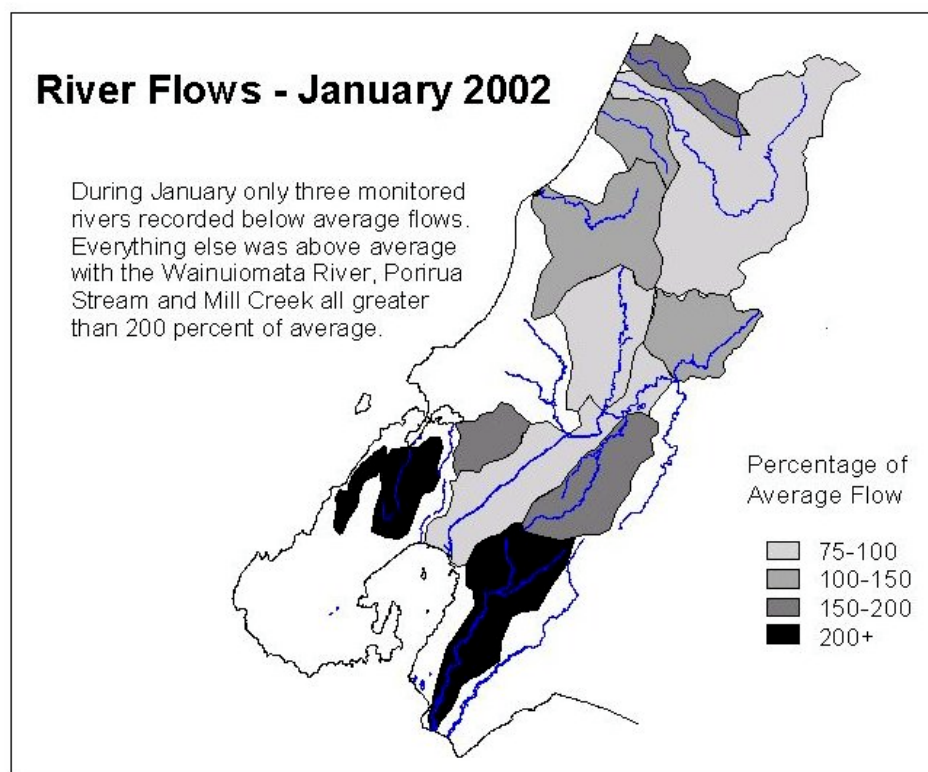
Rainfall in December was above average throughout the western Region. Up to three times the normal monthly rainfall fell over Wellington, with all other sites receiving rainfall between 150% to 250% of average.

In response to the wet end of year conditions, river flows were predictable well above average. The following figures show that Wellington streams were particularly affected. The flows recorded in the Porirua Stream in November and December were 400% and 600% of normal November and December flows. Mill Creek recorded flows that were 500% and 600% of normal for the two months.

hour (the normal average for the whole month of January is 79mm), of this amount a staggering 64mm fell in just 30 minutes. During the storm 53mm of rain was recorded in one hour at Kelburn. Obviously the WRC raingauge was right under a few thunderstorm cells and gives a better indication of the very intense nature of the storm.

During January, total rainfall records were generally average to above average in Wellington, Wainuiomata and the Hutt Valley, and below average on the Kapiti Coast and in the Tararua Ranges.

River flows were still high during most of January. Only the Akatarawa, Hutt and Otaki Rivers recorded monthly flows that were lower than the average.



2.4 Air Quality Monitoring

2.4.1 Ambient Air Quality Monitoring

We currently monitor ambient air quality at two sites in Lower Hutt (Birch Street Reserve) and Upper Hutt (Trentham Fire Station).

The graphs below represent air quality at the location indicated when the monitoring results are compared to ambient air quality guidelines. The assessment categories are as follows:

Category	Maximum Measured Value	Comment
Action	Exceeds Guideline	Completely unacceptable by national and international standards.
Alert	Between 66% and 100% of the guideline	A warning level which can lead to guidelines being exceeded if trends are

Acceptable	Between 33% and 66% of the guideline	not curbed. A broad category, where maximum values might be of concern in some sensitive locations, but are generally at a level that does not warrant dramatic action.
Good	Between 10% and 33% of the guideline	Peak measurements in this range are unlikely to affect air quality.
Excellent	Less than 10% of the guideline	Of little concern.

Results for the Past Six Weeks at Upper Hutt

Results for the Past Six Weeks at Lower Hutt

2.4.2 *New Monitoring Station*

We have recently commissioned a new monitoring site in the Te Aro area. The carbon monoxide analyser stationed at the site will be monitoring air pollution derived mainly from motor vehicle emissions in this inner city area. Previous monitoring, carried out in 1999, recorded high levels of carbon monoxide at Vivian and Victoria Streets.

2.4.3 *Trans-Nation Air Pollution*

The recent bush fires in Sydney caused a substantial amount of air pollution in Australia. During westerly winds, the air pollutants were carried across the Tasman to New Zealand. Our air quality monitoring stations at Upper Hutt and Lower Hutt both recorded peaks in fine particle concentrations (from smoke) over New Year due to the Sydney fires.

2.5 Stormwater Quality Reference Group

On 1 February we convened the first meeting of the Stormwater Quality Reference Group. This group comprises staff from the Regional Council and territorial authorities who have responsibility for stormwater management. The group has been established to ensure that territorial authorities are fully aware of the major stormwater investigations about to be undertaken by the WRC, and are able to provide initial input to these investigations. In the longer term it is hoped that this group will become a forum for exchanging ideas and experience in stormwater management.

3. Resource Quality

Our Resource Quality team provide a pollution response service to the western Region. They are also involved in monitoring compliance for non-consented activities, and waste management and contaminated sites issues. This year we are implementing the Council's new pollution prevention programme *Take Charge*.

3.1 Pollution and Non-compliance Complaints

A summary of pollution complaints, our performance in responding to them and enforcement action taken is reported separately.

3.2 *Take Charge* Implementation

Take Charge is our pollution prevention programme. *Take Charge* is being implemented in the Seaview / Gracefield area. So far staff have completed audits at four sites: Griffins, Chem Pro, Allied Movers and Onyx. The audits and *Take Charge* educational material has been well received by the participating companies.

3.3 Unwanted Agrichemical Collection

In the last long term financial strategy provision was made for the collection and disposal of unwanted agricultural chemicals from rural properties in the Region. Tredi NZ Ltd have been awarded the contract to undertake this work for us. Collection activities will begin in February starting in Masterton District and then progressing through the remainder of the Wairarapa and ultimately into Kapiti Coast and rural areas around Porirua, Wellington and the Hutt Valley.

I intend to provide regular reports to the Committee outlining progress in this project as it proceeds.

3.4 Quarry Audit

Staff are currently completing environmental audits of the eight quarries operating in the western part of the Region. These audits will assess compliance with the rules in the Regional Plans and the Resource Management Act 1991. Staff will help the quarry operators to identify actual and potential pollution sources and advise them on appropriate remedial actions.

This project implements our strategic direction to work more closely with businesses in the Region to prevent pollution. A full report is expected at the end of March.

3.5 Contaminated Site Investigations

Work is progressing on two contaminated sites owned or occupied by the Regional Council.

Asbestos was found to have been dumped in an area at the Rimutaka Summit. The asbestos came from the fire boxes of the trains that used to ply this line. Investigations are underway to quantify the extent of contamination and to determine how much cover is available on site to cover the dumped material.

We are also investigating the indoor air quality at the WRC Greytown depot . Early investigations showed high levels of hydrocarbons inside the building which are currently used by Biosecurity Officers. Re-testing of the indoor air will help to determine the health risk associated with the use of this site.

4. **Staffing Matters**

Tamsin Mitchell completed a six month contract with the Department on 26 January. She had been updating and revising our quality system so that it complies with the new ISO 9000/2000 standard.

Consents Management Department Report Paula Bullock, Manager

February 2002

1. Consent Statistics

We have received 211 consents to date this year. This compares with 240 consents received for the same period last year.

2. Appeals

All of the boatshed appellants, (except for Marilyn Goddard) have withdrawn their appeals.

We are continuing to work through appeals on State Highway 58 (Haywards), State Highway 2 (Melling to Petone) and Western Wastewater Treatment Plant. At this stage no hearing dates have been set and it is likely that we will enter mediation before a formal hearing is required.

3. Compliance

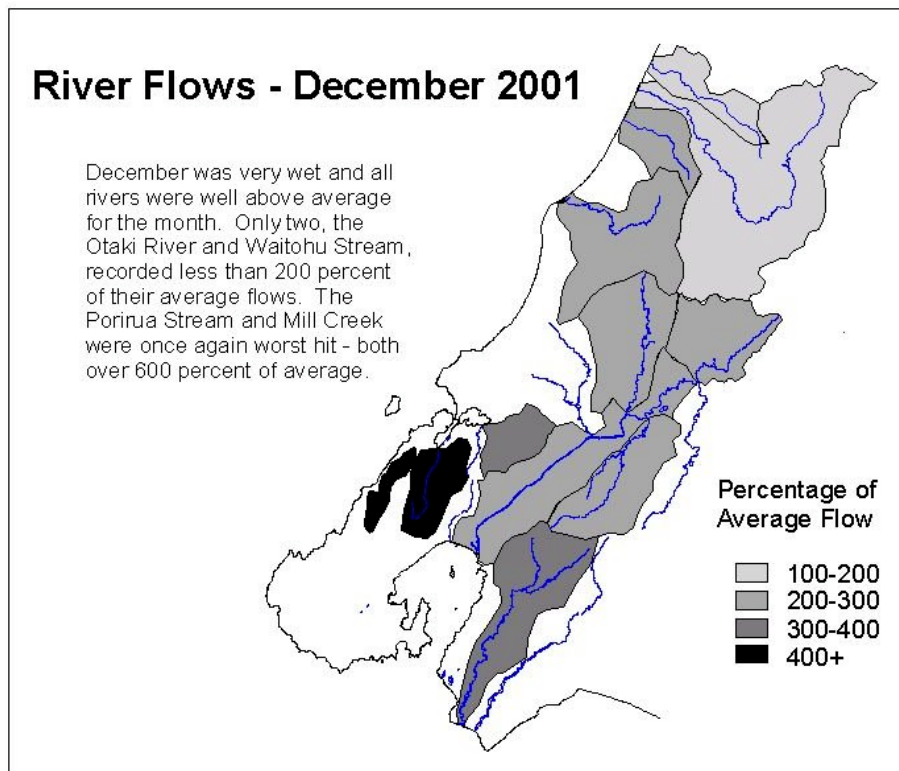
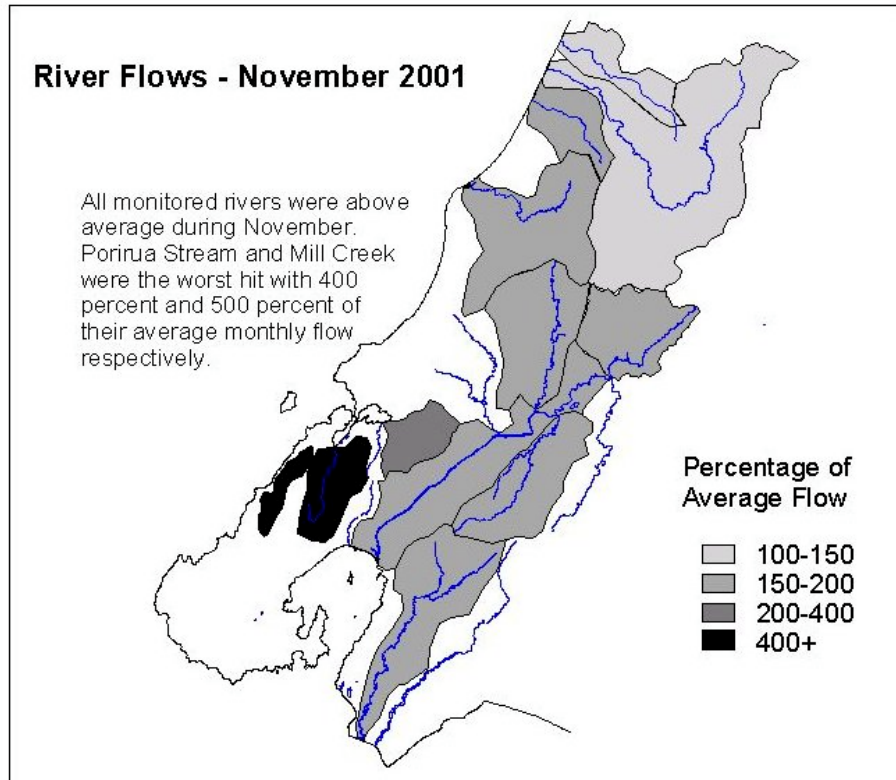
3.1 Abatement Notices

There have been no abatement notices issued this financial year.

3.2 Infringement Notices

Roadex (formerly MKL and CEH) had requested a hearing for the six infringement notices it was issued for offensive odour beyond their boundary. Three of the notices were issued on the company and three on the director, Gary Morgan. A hearing date of 25 January 2002 was set. However, before we reached the hearing we agreed with the Roadex to drop three of the six infringement notices. Our rationale for doing so was:

- costs associated with a day in court
- the possibility of only being granted three of the notices
- we could provide a memo to the court saying that we had settled on payment of three of the notices, but in withdrawing the other three we were not admitting that they had been issued incorrectly.



January

The very wet weather continued into the first two weeks of January. A huge amount of rain fell over Wellington City on January 10 - flooding streets and buildings, and causing slips. The WRC rain gauge at Karori Reservoir recorded 94 mm in just one

3.3 **Prosecution and Enforcement Orders**

Roadex

Roadex has installed a carbon filter to mitigate the asphalt odour coming from the plant. Since the installation of the filter we have received some complaints (but not nearly as many prior to the carbon filter) and have not confirmed any breaches of consent.

Burrell Demolition

Burrell Demolition has filed an appeal with the Court of Appeal. A hearing date of 7 March 2002 has been set.

Horokiwi Quarries

We sought to prosecute Horokiwi Quarries for an unauthorised discharge of silt in to the Horokiwi Stream and Wellington Harbour. Horokiwi Quarries pleaded guilty to the charge and was fined a sum of \$2000 on Friday 1 February 2002.

4. **Other**

4.1 **Staffing**

Since the last committee meeting Frances Lojkine has resigned. I have been lucky enough to replace both Peter Day and Frances early in the new year. Richenda Garland and Jason Pene have started with the department as Resource Advisors. Richenda has a degree in Environmental Science and Jason has an Engineering Degree.

Applicant	Proposal	Date Consent Lodged	Date Submissions Closed	Number of Submissions Received	Pre-hearing Held	Hearing Held	Hearing Committee Members	Date Decision Released	Granted or Declined
Lambton Harbour Management ¹	Consents associated with the development of the Taranaki Street Wharf and Lagoon area	09/04/99	21/05/99	77		04/08/99 05/08/99 06/08/99	Councillor Buchanan, Tony Town (Commissioner)	06/09/99	Granted with conditions now under appeal.
M Goddard	Overnight stays in boatshed	11/05/00	19/07/00	133	N/A	21/08/00 – 23/08/00	Councillors Buchanan, Gibson and McDavitt	20/09/00	Declined now under appeal. Tentative Court date early this year.
B and S Pidford	Overnight stays in boatshed	31/05/00	19/07/00	133	N/A	21/08/00 – 23/08/00	Councillors Buchanan, Gibson and McDavitt	20/09/00	Declined now under appeal. Tentative Court date early next year. Appeal withdrawn.
M Ambrose	Overnight stays in boatshed	02/06/00	19/07/00	134	N/A	21/08/00 – 23/08/00	Councillors Buchanan, Gibson and McDavitt	20/09/00	Declined now under appeal. Tentative Court date early next year. Appeal withdrawn.
M Ambrose	Consents associated with the construction of a new boatshed	02/06/00	19/07/00	139	N/A	21/08/00 – 23/08/00	Councillors Buchanan, Gibson and McDavitt	20/09/00	Declined Settled by Consent Order.
L Ramsey	Overnight stays in boatshed	02/06/00	19/07/00	133	N/A	21/08/00 – 23/08/00	Councillors Buchanan, Gibson and McDavitt	20/09/00	Declined now under appeal. Tentative Court date early next year. Appeal withdrawn.

Applicant	Proposal	Date Consent Lodged	Date Submissions Closed	Number of Submissions Received	Pre-hearing Held	Hearing Held	Hearing Committee Members	Date Decision Released	Granted or Declined
A and N Johns	Overnight stays in boatshed	06/06/00	19/07/00	134	N/A	21/08/00 – 23/08/00	Councillors Buchanan, Gibson and McDavitt	20/09/00	Declined now under appeal. Tentative Court date early next year. Appeal withdrawn.
O and K Martin	Residential use of boatshed	06/06/00	19/07/00	162	N/A	21/08/00 – 23/08/00	Councillors Buchanan, Gibson and McDavitt	20/09/00	Declined now under appeal. Tentative Court date early next year. Appeal withdrawn.
R and P Lewis	Residential use of boatshed	06/06/00	19/07/00	139	N/A	21/08/00 – 23/08/00	Councillors Buchanan, Gibson and McDavitt	20/09/00	Declined Appeal withdrawn.
C Feast	Overnight stays in boatshed	06/06/00	19/07/00	134	N/A	21/08/00 – 23/08/00	Councillors Buchanan, Gibson and McDavitt	20/09/00	Declined now under appeal. Tentative Court date early next year. Appeal withdrawn.
New Zealand Galvanising	Discharge to air for contaminants from a hot dip galvanising process and associated activities	24/07/00	29/08/00	4	08/09/00	Application on hold to allow for ambient air monitoring to be undertaken.			
Transit ²	Consents associated with the construction of an interchange at the intersection of State Highway 2 and 58	07/11/00	19/01/01	99	N/A	27/06/01 – 16/07/01 Reconvened on 01/08/01-02/08/01 and 27/08/01	Commissioners Helen Tobin, Russell Howie and Richard Fowler	12/10/01	Granted – one appeal received
Transit ²	Consents associated with the	07/11/00	19/01/01	99		27/06/01 –	Commissioners	12/10/01	Granted – one

Applicant	Proposal	Date Consent Lodged	Date Submissions Closed	Number of Submissions Received	Pre-hearing Held	Hearing Held	Hearing Committee Members	Date Decision Released	Granted or Declined
	realignment of State Highway 58					16/07/01 Reconvened on 01/08/01-02/08/01 and 27/08/01	Helen Tobin, Russell Howie and Richard Fowler		appeal received.
Wellington City Council	Change of consent monitoring conditions for the Moa Point Pump Station	02/11/00	08/12/00	2		On hold for further information in relation to monitoring requirements			
Wellington City Council	Renewal of discharge of milliscreened effluent to the coast during wet weather events, Western Wastewater Treatment Plant	20/12/00	05/03/01	9	17/05/01	8/10/01 9/10/01	Ian Buchanan Ian Stewart	26/10/01	Granted – One appeal received.
Transit ⁴	Upgrade of State Highway 2 from Dowse Drive to Petone	30/03/01	29/05/01	100+		1/10/01 – 9/10/01	Helen Tobin, Richard Fowler, Barry Butcher	21/11/01	Granted – three appeals received.
Transit ³	Realignment and safety improvements to McKays Crossing	20/07/01	6/9/01	17	9/10/01	27/11/01, 28/11/01	David Hutchinson, Miria Pomare, Helen Tobin		
BP Oil NZ Ltd	To change the use of an existing pipeline by resting it on petroleum product instead of seawater between shipments	20/7/01	16/10/01	17					
John Gabites	Discharge to air from Piggery and other land use consents.	25/09/01	01/11/01	7	12/11/01				

Applicant	Proposal	Date Consent Lodged	Date Submissions Closed	Number of Submissions Received	Pre-hearing Held	Hearing Held	Hearing Committee Members	Date Decision Released	Granted or Declined
Sink F69 Charitable Trust	To create an artificial reef by sinking the former HMNZS Wellington	3/10/01	3/12/01	71		Hearing Scheduled 25/02/02			
Wellington City Council ¹	Oriental Bay Enhancement Project	23/8/01	22/11/01	41		23/01/02- 25/01/02	Ian Buchanan, Conrad Pharazyn, John Lumsden, Alistair Aburn, Aka Arthur		
Transit	Kaitoke Hill upgrade	20/7/01	12/12/01	2		04/02/02	Helen Tobin		
Wellington Regional Council – Flood Protection	To extract gravel from the Waikanae River for flood protection purposes	04/12/01	08/02/02						

- 1 These applications were heard jointly with Wellington City Council
- 2 These applications will be heard jointly with Hutt City Council, Porirua City Council and Upper Hutt City Council
- 3 These applications were heard jointly with Kapiti Coast District Council
- 4 These applications will be heard jointly with Hutt City Council

Harbours Department Report

Mike Pryce, Manager

February 2002

1. Harbour Navigation Aids

Are all operating satisfactorily.

The radio control that allows Beacon Hill to manually operate the Front and Rear Leading lights is in the process of being upgraded. A new system was designed late last year and will be installed shortly. The new system will provide more information for monitoring the lights.

2. Oil Pollution Response

Eleven Marine Oil Pollution reports were received and investigated. All were of a minor nature and none required any clean-up action.

3. Departmental Activities

On 12 December 2001 we held our annual Wellington Oil Pollution Support Group meeting. This is held so that commercial and regulatory organisations that may become involved in a Marine Oil Spill Response get together and discuss points of interest which have occurred over the past year, and plan future exercise activities.

On 9 January 2002 the quarterly Marine Oil Spill Response Equipment check was carried out on behalf of the Maritime Safety Authority.

4. General

- The temporary Harbour Rangers have been doing a very good job in educating boaties and promoting the new bylaws. We have received several positive responses from the public regarding them. To compliment this programme, radio stations have run advertisements from early February and will continue until after Easter, concentrating on Bylaws 2.1 Lifejackets and 3.2 Speed of Vessels.
- On 13 January 2002 a “hydroplane” (power-boat) event was held in Lambton Harbour, which was a National event, and the first time that it had been held in Wellington for over ten years. Several noise complaints were received and these are being investigated by Resource Investigations. With the excessive engine noise produced by some of the very large engines now used by these craft these days, future events by these craft in this area may not be appropriate.

- During the few days of fine weather over the past few weeks, some fast ferry wash effect on Seatoun Beach has lead to several complaints being received. Council has reminded the public, via media releases, to take appropriate precautions for up to ten minutes after *The Lynx* has passed. On fine weather days our Harbour Rangers have patrolled the beach immediately before the afternoon sailing of *The Lynx* and advised beach users to be aware of the wash; this activity has been well received by the public.

Some additional signage has been erected at Seatoun beach, and it is now unlikely that any beach-goer could miss the warnings. However, the extra signage has also brought complaints from some residents who claim that their sea-views have been compromised.

Emergency Management Department Report

Rian van Schalkwyk, Manager

February 2002

1. Project Phoenix

Exercise Phoenix III is a co-operative venture involving councils and response organisations in the Auckland and Wellington Regions, and the Ministry of Civil Defence and Emergency Management. It expands on previous Phoenix activities, which have discussed the demands for support that a major Wellington earthquake may produce.

The overall aim of Exercise Phoenix III is:

To improve planning for management of the initial logistics support required in response to a major earthquake in Wellington.

The Exercise Co-ordinating Instruction was completed in November 2001. This document outlines the programme of activities and the responsibilities of key participants. It will be supplemented by a series of other papers that will be issued later this year:

- A Detailed Scenario and Writing Instructions, to ensure co-ordination of exercise design tasks;
- An Exercise General Instruction, written to inform participants of how the exercise will be 'played';
- Evaluation and umpiring instructions, to define how the exercise will be managed.

The Instructions will be finalised at a meeting in Auckland scheduled to take place on 26 and 27 March 2002.

As a co-operative venture, Phoenix III is co-ordinated through contact people representing the main participants, namely:

- Wellington Region, Rian van Schalkwyk
- Auckland Region, Tim Jago
- Ministry, Kevin O'Kane

There are five Key Starting Response Requirements for emergency management in a regional emergency event:

1. City/district based local management of emergency response.

2. Regional co-ordination of external supply of resources to support and sustain critical response activities of search and rescue, treatment and movement of the injured and the provision of safe water.
3. Internal and external roading access. In this regard we are in the process of putting together an Emergency Roothing Access Strategy with the roading managers of the TLA's and Transit.
4. Supply of water to cities/districts until bulk water reticulation is functioning at a competent level.
5. Transport Recovery Co-ordination (land, air, rail, and sea) for the Region. This is important for both response and disaster recovery purposes.

The scenario used for Phoenix III would, in reality, also impact on the adjacent regions of Marlborough and Manawatu-Wanganui. However, these effects will not be specified in exercise design, nor included in exercise play.

A general invitation was offered to local authorities and response services, to participate in Exercise Phoenix III. Their participation will be in the form of:

1. joining an email list for exercise updates and the final exercise report;
2. providing umpires or other exercise staff during the main exercise activity; and,
3. where appropriate, setting up control points to assist exercise conduct.

Other developments include dedicated meetings and workshops that were held with:

- Dr James Gough (impact of tsunami) after a major earthquake;
- the Phoenix Planning Group who had a conference that took place in Wellington on 20 and 21 November;
- the National USAR (Urban Search and Rescue) Steering Group (19 November and 10 December);
- the Emergency Managers of Police, Fire, Ambulance, District Health Boards, Lifelines, and Local Councils (27, 29 and 30 November and 3, 6, 17, 18 and 19 December and 24, 29 January 2002);
- the WRC Bulk Water Group on 24 January 2002.

Regarding the provision of safe water in an emergency we have obtained a legal opinion from Oakley Moran, which set out the responsibilities of the WRC in providing a bulk water supply. We are in the process of setting up an Emergency Water Group (water asset managers of local authorities and emergency managers) to determine vulnerabilities and gaps and what options are available to rectify any problems. The Group also wishes to determine principles guiding the provision of a water supply for Wellington Region residents after a regional earthquake event. It is

all about evaluation strategies, lead agencies, operational matters, dependencies on infrastructure and contractors, public expectations and confidence builders or breakers and external resources that will be needed immediately.

A great number of people within various organisations have already contributed significantly to the planning processes of Project Phoenix. We are meeting on a regular basis and we are confident that Project Phoenix will be a great success and that the process that is being applied will be recognised as a tool to be used to address the unique issues facing other parts of New Zealand.

2. Social

2.1 Community Relationships

- Several members of the public have visited our office or called to obtain hazard maps and other emergency management information.
- We did a presentation to a Childcare Group about emergency management.
- We attended the Wellington (27 November), Porirua (3 December) and Kapiti Coast (6 December 2001) Emergency Services Co-ordinating Committee meetings. Discussions were mainly about Project Phoenix, the Civil Defence Emergency Management Bill, exercises, lifelines and the 11 September attacks.
- As a member of the Wellington International Airport's Emergency "First Impact" Committee, we also form part of that Committee's exercise planning group. We meet on a regular basis and are currently planning for the next exercise that will take place on 14 February 2002.
- We participate in the Wellington Region Oil Pollution Support Group. The Group met on 12 December to discuss issues like oil pollution, response, training and exercises.
- John Allard (Corporate Services) and the Manager, Emergency Management have met with Willis Consulting on 14 December to discuss "Risk Management Strategies" and "Risk Management Planning"
- We are members of the Wellington Region Rural Fire Committee. In this regard we participate in exercises, training and actively take part in their Incident Management Team. Debbie Cunningham was deployed on the 3rd of January 2002 to Sydney, New South Wales, Australia to assist with the managing of the recent bush fires. **See report under 2.5**
- We are members of a planning committee consisting of members from the IGNS, NIWA, MCDEM, WEMO and WRC. The committee is planning for a Natural Hazards Seminar that will take place in Wellington on 14 and 15 August 2002.

2.2 Territorial Authority Relationships

- Emergency Management Staff attended three meetings of Emergency Management Officers on 19 November and 17 December 2001 and 4 February 2002. Main topics of discussion were the new CDEM Bill, CDEMG Planning and strategies, Project Phoenix, training, publicity and rural fire.
- The Manager, Emergency Management was involved with the training of volunteers at the Masterton District Council on 10 December. A presentation about Project Phoenix was also made at the gathering.
- Several meetings were held to discuss CDEM Planning.
- The Manager, Emergency Management was invited to take part in the Wellington City Controllers training and exercises on 29 January 2002. These training and exercise sessions will continue for the rest of this year and will comprise about three hours per month.
- The Wellington Regional Council (Emergency Management) will host a Regional Emergency Managers Forum on 28 February 2002. All the Emergency Managers of the Regional Councils and the Unitary Authorities will attend the forum. Topics to be discussed include CDEMG Planning and progress, CDEMG legislation, quantifying the value of an Emergency Management Officer, advertising of Emergency Information in the Yellow Pages, Project Phoenix, Co-ordinated Incident Management System, etc.

2.3 Central Government Relationships

- Attended various meetings with the Ministry of Civil Defence Emergency Management (MCDEM) on CDEM Planning (29 November, 5 December, and 23 January 2002).
- Attended a meeting with members of the Officials Domestic and External Security Committee (ODESC) on 5 December. A decision by Cabinet that morning resulted in both the National and Regional headquarters located in the basement of the Beehive to be terminated and changed into a National Crisis Management Centre. We were notified at the meeting that we would soon be given notice to evacuate the premises.
- Attended a meeting with MCDEM on 25 January 2002 about a National Crisis Management System and how our system could be linked to such a system.

2.4 Iwi Relationships

Nil to report

2.5 Employee Relationships

2.5.1 *New South Wales Fires Jan 2002*

“The Christmas Fires” began on Boxing Day 2001 and consisted of over 100 separate fires in an area circling Sydney by some 300 km. The fires were a combination of arson and natural ignitions (lightening). Fire fighters and management teams were mobilised from every state in Australia. Weather conditions were frequently extreme, including high winds and temperature in excess of 35 degrees.

Deployment

The New South Wales Fire Service requested that the NZ National Rural Fire Authority send a team of incident management staff to assist them with the management of the fires.

10 members of the National Rural Fire Incident Management Team were deployed. Members are from local government, Department of Conservation, the NZ Fire Service and the forestry industry.

WRC involvement

Debbie Cunningham, Emergency Management Officer, was deployed as part of the team.

She was posted with four others in the team to Shoalhaven, 2 hours south of Sydney. Debbie’s role was as Planning Assistant and then Planning Officer. This role involved mapping fire progress, writing strategies and plans for the next day of firefighting, and allocating resources to where they would most likely be needed – based on predicted weather information and fire behaviour.

The deployment was seen as an opportunity for Debbie to use her skills to assist the Australians, but also to bring back any lessons to be learned from their way of managing incidents.

Lessons learned

- Huge numbers of people are needed to run an event this size. A dedicated facility is essential and it needs to be fully equipped.
- GIS mapping is invaluable. WRC should strengthen its ability to use GIS to plot incidents that happen in an emergency. The Emergency Management Department needs to have GIS capability on all computers in the EOC and in the mobile EOC facility.
- Roles that support the core incident management positions need to be specifically trained for. WRC Emergency Management has begun this training in these roles and should continue to do this.

- Media management needs to be carried out by an internal person so that the messages of the organisation are expressed not inferred by the media themselves.
- The same skills can be used to manage incidents be they fire or other emergencies.
- The links between Emergency Management and Fire Authorities need to be maintained as they provide an opportunity for joint training and operational experiences.
- General training in the Co-ordinated Incident Management System should be undertaken by all Council staff who work with the emergency services at incidents e.g. Harbours, Emergency Management, Pollution Response/hazardous substances, Parks fire staff.

2.5.2 *Other activities*

- Attended an HZNO-seminar on 26 November.
- Attended a Yellow Pages seminar on 29 November.
- In recognising the "Year of the Volunteer" John Allard (in his capacity as Regional Controller) on 13 December presented certificates to our emergency management volunteers as appreciation for their contribution towards emergency management in the Region.
- Attended a meeting with Colin Munn, Brendan Paul and Phil Purvis regarding flood protection management and the role of the emergency management department in flooding events.

3. **Environment**

3.1 **Earthquake reports**

Since the last report, 44 earthquakes bigger than 3.0 on the Richter Scale occurred in the country. The following Earthquake Reports for the Wellington Region (and reports of earthquakes felt in Wellington) were received from IGNS:

- **2002 Jan 17** mag. 4.2 (29 km deep) *50 km south of Wellington*
- **2002 Jan 11** mag. 3.6 (44 km deep) *20 km north-west of Wellington*
- **2001 Dec 15.** mag. 3.6 (35 km deep) *20 km north-west of Wellington*
- **2001 Dec 4.** mag. 4.2 (42 km deep) *20 km north of Castlepoint*
- **2001 Nov 24** mag. 3.5 (10 km deep) *10 km south-east of Upper Hutt*
- **2001 Nov 10** mag. 4.7 (78 km deep) *40 km north-west of Paraparau*

3.2 **Special Weather Bulletins:**

We received nine heavy rain warnings (two in November and seven in December) and three strong wind warnings (on 3 January 2002). All organisations involved were

notified. Surface flooding occurred in Wellington and the Hutt Valley after sudden downpours early in January.

3.3 **Communications**

Weekly tests of the communications network are still being carried out. The system is functioning well and no problems have been experienced.

4. **Economic**

- Performance against Performance Indicators on target
- Expenditure within budget

Richard Waddy, Divisional Accountant

Financial Position : 31 December 2001

1. Operating Results

Environment Division
Summary Income Statement
For the Period Ended 31 December 2001

We are pleased to report the operating results for the Six month period ended 31 December 2001.

	Year to Date			Full Year
	<u>Actual</u> <u>\$000s</u>	<u>Budget</u> <u>\$000s</u>	<u>Variance</u> <u>\$000s</u>	<u>Budget</u> <u>\$000s</u>
Rates	3,421.3	3,421.3	--	6,842.5
Other Revenue	1,089.9	931.5	158.4 F	1,894.2
Total Revenue	4,511.2	4,352.8	158.4 F	8,736.7
Less:				
Direct Expenditure	3,729.2	3,840.7	111.5 F	8,068.9
Indirect Expenditure	443.1	469.8	26.7 F	949.6
Total Operating Expenditure	4,172.3	4,310.5	138.2 F	9,018.5
Operating Surplus (Deficit)	338.9	42.3	296.6 F	(281.8)

2. Operating Surplus

The Division's finances are satisfactory. For the period an operating surplus of \$339,000 was posted which is a significantly above our budgets for the corresponding period. The budgets provide for a smaller surplus of \$42,000.

The result translates to a net favourable variance \$297,000, comprising increased revenue of \$158,000, and reduced expenditure \$138,000.

3. Revenue

Total Revenue at \$4,511,000 was \$158,000 above our budget target of \$4,353,000. The increased revenue is the result of some large notified resource consent applications - the Otaki Pipeline Project (\$68,000) and the upgrade of SH58 and SH2/58 (charges recovered this year - \$27,000). In addition, we have passed on the costs of disposal of the hulk of "Sarfaq" (\$32,000) to the vessel owners.

During the period the annual resource management charges were processed. In total, these raised revenues of \$225,000 (last year \$200,000). The increase is mainly a result of the new charging policy which incorporates a higher staff chargeout rate.

4. Total Expenditure

The Division finds itself in its customary position with a total expenditure, \$4,172,000, which is some \$138,000 (or 3.2 %) below budget.

The main reasons for this variance are:

- Personnel costs are presently under budget by \$24,000. Staff movements in the period caused the under-spend.
- Material costs are slightly over budget by \$21,000. Commissioners' costs from the Otaki Pipeline and the upgrade of SH58 and SH2/58 hearings makeup most of this variance. These costs are fully recoverable from the applicant.
- External Contractors and Consultants were \$76,000 under budget. The level of expenditure on iwi projects expenditure has increased significantly with payment made to the administrative funding project (total budget \$105,000) during the period. So far six of the seven iwi are participating in this project. However, in total, the iwi budget trails by some \$81,000 behind our expected expenditure level.
- The Bad Debts and Provision for Bad Debts at \$10,000 is the combination of the reversal of the bad debt provision of \$22,000 from Telstra Saturn who paid their outstanding bill (\$22,300) almost immediately after the close of the financial year (00/01) and the now unpaid "Sarfaq" debt (\$32,000). The latter is now 90+ days in arrears.

5. Capital Expenditure

The purchase of the Ecobus, the vehicle to be used to promote more sustainable ways of living to the public, has been slightly delayed (\$175,000). However, the favourable variance has been offset to some extent by the purchase of three vehicles (total cost - \$18,500) that were surplus to the Water Group's needs. Our budgets provided for a

short-term lease for two vehicles whilst the other is unbudgeted. It is planned to dispose of these vehicles by 30 April 2002. The vehicles have been used for our additional summer harbour rangers and for our RMA compliance work which always increases during the summer months.