
Utilities and Services Group

January/February 2010

Parks

Review of operations for the period ended 28 February 2010

1. **Manager's comments**

At the last Committee meeting a question was asked about differences between the ecological impacts of rats and mice. Rats are the worst pest of the two, as they eat the birds, eggs, snails, lizards and invertebrates, as well as fruits, seedlings, flowers and seeds. Mice live on smaller invertebrates, seeds and some leaf material. Ideally, mice should also be controlled but their small home ranges (25 m) and particular baiting requirements make them very difficult to control. An analysis of the Wainuiomata Mainland Island rodent/mice tracking results shows that mice are in low numbers in the presence of rats (i.e., before the start of the Mainland Island and in the non-treatment area) but breed up quickly when rat numbers are low (see chart on page 6).

Late in February a serious scrub fire at Whitireia Park illustrated the challenges facing us in taking over this park. Unfortunately the fire has set the park back many years in terms of bush regeneration. The Department of Conservation (DoC) is convening a meeting with Greater Wellington Regional Council (GWRC), Porirua City Council, iwi and other interested parties regarding restoration of the burnt area. In addition to this, some widespread publicity about incidents involving dogs in the park has also contributed to the impression that this park has some serious problems that need addressing. While DoC still manages the park, as we move closer to managing the park these issues are becoming a focus for us.

2. **Environmental Management**

2.1 **Pest control**

Officers have begun the removal of signs associated with the August 1080 operation in the Hutt Water Collection Area, Kaitoke West and Akatarawa Saddle. Monitoring of carcass decomposition shows that the carcasses are no longer toxic, so dogs can now be allowed into those areas.

Goat control is under way on GWRC managed land at present. Reinvasion sites on the southern and eastern boundaries of the Wainuiomata/Orongorongo Water Collection Area were checked and 12 goats culled. In the Akatarawa Forest hunting was focused around Mt Wainui and the upper Whakatikei Catchment. Twenty-seven goats were culled during this contract. This area has historically held high goat numbers and some of the terrain is erosion-prone. A weather "bomb" in 2003 resulted in a large number of slips in the area. Twenty-seven goats were culled during this contract. The hunters were impressed by the considerable amount of regeneration seen. Wineberry, ferns and other small shrubs are now closing over the slips. This indicates that the hunting effort is providing good outcomes for forest regeneration.

The weed team has been checking sites of infestations it has previously controlled, e.g., Japanese honeysuckle in Butterfly Creek, Himalayan honeysuckle at Hutt Forks and hops in Korokoro Valley. At Lake Wairarapa

more alders have been controlled at Lake Domain, while checks were made on pampas and willow at Pounui Lagoon. The team recently had an extra assistant to help them tackle old man's beard in Speedy's Reserve (see photo on page 6).

2.2 Monitoring

2.2.1 General

Five of the six permanent plots in the Parangarahu Lakes block have been remeasured. Some significant changes have occurred to the vegetation in these plots since they were first measured in 2004 (when grazing was stopped). In one 20 m by 20 m plot as many as 74 plant species were recorded. This plot had manuka with exotic grasses and herbs in the understorey in 2004. Now it has a dense layer of tree ferns, with a diverse range of native ferns and herbs underneath. In the grassland plots native shrubs such as manuka and *Coprosma propinqua* are pushing through the grass layer, and slowly increasing in abundance. It is pleasing to note that gorse appears to be spreading at a slower rate than these native shrubs. However, measuring seedling plots in gorse does present some challenges! (See photo on page 6).

2.2.2 Lizard survey

Lizard expert, Richard Romjijn (also a staff member in the Environment Group's Education Team) was contracted by Parks to complete surveys for lizards in the parks and forests over the summer. Unfortunately, he did not find high numbers of lizards during the allocated search time. Lizards are difficult to find in forest but officers were surprised at the low numbers found in areas such as Queen Elizabeth Park, Belmont Regional Park, Akatarawa Forest and the Wainuiomata Catchment. However, one site had high lizard numbers - this was in the rock face at the Parangarahu Lakes block. Thirty-nine common gecko, 24 common skink and a copper skink were recorded. In the northern block of East Harbour Regional Park 30 common gecko were found in a wooden sign. Southern North Island gecko skins were seen in the current water collection areas and a Wellington green gecko was recorded in the northern block of East Harbour Regional Park.

In East Harbour a forest ringlet butterfly (see photo on page 6) was recently seen by Environmental Technician, Owen Spearpoint. This is the first recording of this species for 30 years according to insect expert, George Gibbs, who has been researching forest ringlet in the park. This butterfly has an association with the plant *Gahnia* – a cutty sedge. It has become increasingly rare over the past 50 years, as the caterpillars are attacked by wasps.

2.2.3 Project Kaka

Birds were monitored in the three Project Kaka treatment areas in November. This data has recently been analysed. The three sites are non-treatment, proposed three yearly treatment and five to six yearly treatment (Hutt Water Collection Area). There were no significant differences in bird abundance between these sites. An increase in bird numbers in the Hutt Water Collection Area is expected next year, as has been seen following 1080 operations in the past. Breeding success would have increased for the resident birds, as low rat numbers mean less rat predation. A population increase will not be seen until those birds leave the nest and are recorded next spring.

2.3 Wainuiomata Mainland Island

2.3.1 General

There are now 10 kiwi in the Wainuiomata/Orongorongo Water Collection Area. These birds have been released into the Turere Catchment in Rimutaka Forest Park by the Rimutaka Forest Trust and have made their way north onto GWRC land. None of the birds have reached the Mainland Island site as yet but some have nested in the non-treatment area. GWRC is working with the Rimutaka Forest Trust and has ensured that only kiwi-aversion trained dogs are used for hunting in the water collection area. Officers have also agreed to stoat traps being placed around the non-treatment site to assist the survival of the kiwi.

3. Western sector

The Battle Hill ranger has met with Paekakariki Road residents and Pauatahanui Residents' Association. There were no big issues raised concerning Battle Hill, aside from some ongoing concerns regarding the proposed wind farm access route. The ranger has also been dealing with neighbours to the park concerned about noise from events held at Battle Hill. The ranger is working to resolve these issues.

At Oakleigh Street in Belmont Regional Park we have worked to realign sections of track affected by the Otanga School subdivision. As this work proceeds, major changes to the entrance at Oakleigh Street can be expected. Officers are working with Hutt City Council to minimise the inconvenience to park users and to explain to the local community why these changes are being made.

We have also been liaising with the New Zealand Transport Agency (NZTA) to improve signs at the new State Highway/Cornish Street entrance to Belmont Regional Park. Some signs were placed incorrectly and the NZTA responded to correct this. We have also been negotiating use of some land at the Cornish Street entrance now that the State Highway 1 Dowse to Petone realignment is almost complete. This will allow us to have improved parking and access for visitors to this popular entry point to Belmont Regional Park.

4. Eastern sector

We were sad to farewell Scott Farrell, our Wainuiomata/Orongorongo Ranger, in February. Scott has been with GWRC for a number of years, being on-site in Wainuiomata for the past 10 years. We are pleased to announce that we have appointed Grant Timlin as Scott's replacement.

Park visitor numbers have been adversely affected during the variable summer weather. Rainfall was just over 35 percent above average for the month and this, coupled with a bad wind storm on 2 January, saw a mass exodus of campers.

A group of five campers were evicted from Kaitoke Regional Park during January, with one trespassed and fined \$1,000 by the New Zealand Police for "doing donuts" in the campground. Another issue arose during the month with

some campers refusing to pay fees and instead citing the Treaty of Waitangi as the reason for not doing so.

The adverse weather also took its toll in the forest areas. With the obvious increase in road and track clearing necessary following several wind storms, tree falls have been severe. In Wainuiomata a large rimu was blown over, with the resulting hole being left on the access road. It took several loads of rock and gravel to backfill and compact the hole. Time was also spent during this period removing dangerous “hang-ups” from the access routes. (See photos on page 7.)

In Akatarawa an extremely large kahikatea was uprooted by a severe gust and came to rest on our water supply pipe for the Tunnel Gully toilets. This tree was approximately 1.5 m in diameter. Chainsaws were used to cut a passage through the trunk of the tree, big enough to accommodate a person and the water pipe. Water was restored to the toilets within a two day period.

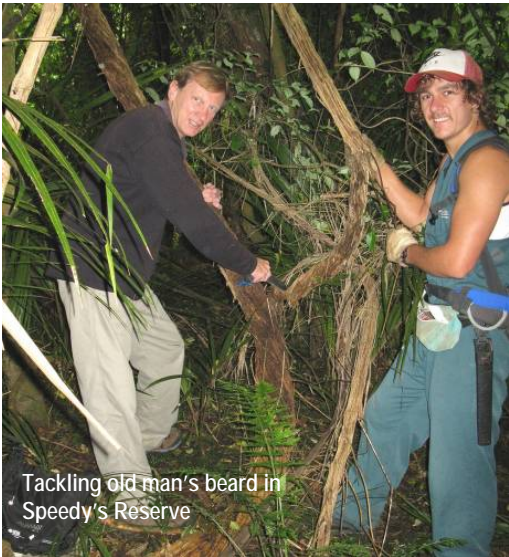
Several other minor tree falls in the Akatarawa and Pakuratahi Forests were removed by the ranger, with assistance from the 4WD clubs.

The walking track to Ultimate Pool in Wainuiomata has now been prepared, metalled and compacted. This track is a short section from Reservoir Road to a swimming hole that is extremely well patronised by locals on hot days.

Forest usage has remained steady, with 15 No. 4WD events involving 200 vehicles, seven motorcycle events involving 235 motorcycles, and three training events.

Work has been completed on the upgrade of the ramp approach to the Truss Bridge in the Wainuiomata Recreation Area. Several people had voiced complaints about difficult access for people with children’s buggies trying to get them up the steps to the bridge. This improvement will alleviate those issues. (See photo on page 7.)

Community work gangs have been busy clearing gorse and broom at Te Marua.



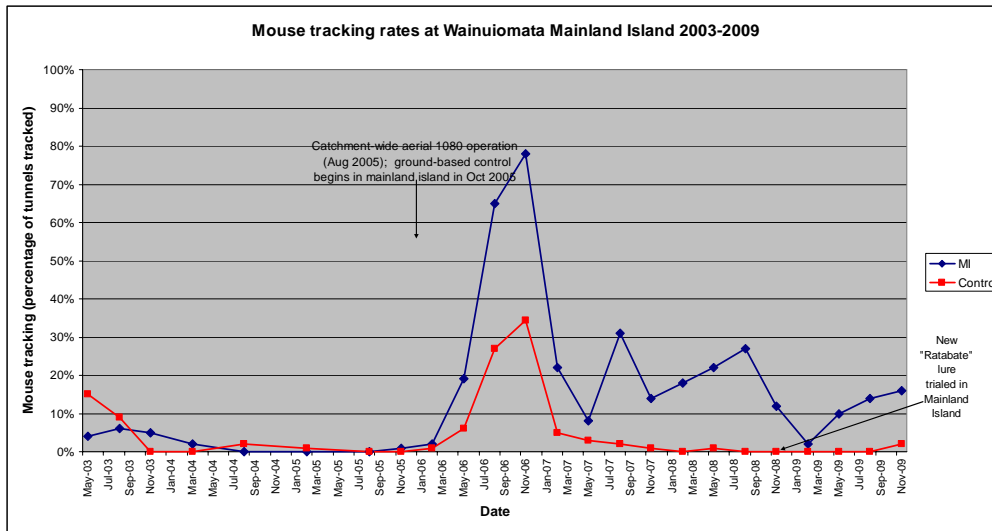
Tackling old man's beard in Speedy's Reserve



Measuring gorse seedling plots in the Lake Parangarahu Lakes block



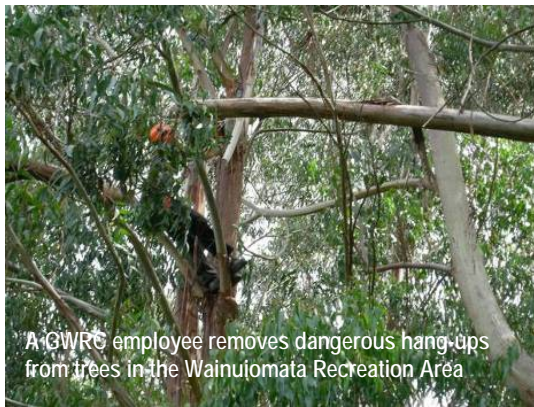
Left - A forest ringlet butterfly seen in East Harbour Regional Park



Kapiti Harriers



Raunati South Residents - Dogs breakfast picnic



A GWRC employee removes dangerous hang-ups from trees in the Wainuiomata Recreation Area



Several minor tree falls in the Akatarawa and Pakuratahi Forests were removed by the ranger with assistance from 4WD Clubs



Kev the Wandering Kiwi is again popular in the Wainuiomata Recreation Area



Our Weed Team was busy in Wainuiomata removing weeds from the Lower Dam



Left and below - The Wainuiomata Truss Bridge is modified to allow easier access for buggies and disabled visitors



Kaiwharawhara Stream crossing of the pipeline to the Messines Road Reservoir

Marketing and Design

Review of operations for the period ended 28 February 2010

1. Manager's comments

Looking ahead to summer 2010/11 and the planned upgrades to the larger of the two water storage lakes, we are very likely to experience some degree of water restriction from December onwards. We have spent considerable time over the period evaluating possible scenarios in ordinary and dry summers and developing a draft communications plan to discuss with our customers at a meeting in early April.

March has seen staff taking on responsibility for promoting and co-ordinating the processing of "full" concessions for regional parks. This covers a variety of areas - from large events, to filming, through to other commercial activities - and should prove an interesting challenge for the team.

2. Water Supply

2.1 Spring/summer water conservation

Water supply to date since 1 December is less than for the equivalent period of any of the last 10 years. The peak day so far has been 176 million litres per day (MLD). Average supply during February (up to 25 February) was 156 MLD. Average daily supply during February in three of the last five years has exceeded 170 MLD. We believe that the few spells of settled fine weather seen over the last three months is a major contributing factor.

We have monitored climate and water use data, weather predictions and the need for related communications on a regular basis. Main outcomes have included:

- Updating our water shortfall forecast early in February, using NIWA's 90 day climate outlooks and conveying the outcomes to our customers.
- Continuing our summer watering tips promotion during February but reducing the advertising schedule. Our advertising described simple "water wise" watering methods and identified garden centres that offered good deals on related watering equipment in association with the promotion. We will seek feedback about watering product sales during March. However, given our reduced advertising and the fact that gardening and watering equipment sales are influenced heavily by weather conditions, we do not anticipate strong results.

A second leaflet *Irrigation Equipment* has been completed and loaded on the *Be the Difference* website. Copies will also be printed for distribution at events and presentations related to water conservation. Two more leaflets *Watering Your Garden* and *Saving Water in Home and Garden* are in development.

2.2 Water efficient showers pilot proposal

We have continued discussions with EECA and Wellington City Council about a pilot project to encourage take-up of water-efficient shower fittings and get related feedback from consumers and plumbers. EECA has proposed the

project, which would involve green plumbers. Their aim is to test thinking about how to promote the benefits of - and overcome objections to - water-efficient showers and to identify water-efficient fittings that consumers feel give a good shower experience. We have commented on the draft project outline and offered further tangible support. At the time of writing EECA was considering changes to its original project proposal and we were awaiting their response to our offer. We will provide updates in future reports.

2.3 Wainuiomata pipeline upgrade

Staff worked closely with the Engineering and Projects Team, and Corporate Communications Department on a comprehensive communications plan for the Wainuiomata (Black Creek) pipeline upgrade.

2.4 Wholesale water supply service level agreement

At present, levels of service for GWRC's wholesale water supply to the Region's four cities are not formally agreed. A significant amount of work by GWRC staff went into drafting a formal supply agreement in 2007/8 but more pressing matters for our customers stalled the process. Capacity has now requested that we resume discussions on this matter, with a view to finalising an agreement. We are reviewing the content of the draft agreement with water supply managers to ensure it continues to reflect current policy and objectives.

3. Parks

3.1 Events

3.1.1 Buggy walks

The February event at Queen Elizabeth Park was a fine day, with nearly 200 participants. Fine weather is forecast for the March event at Kaitoke Regional Park, so there should be a similarly strong turnout. We are currently planning a winter series with Sport Wellington and looking at opportunities for new routes.

2.2.2 Great Outdoors summer events

We are nearing the end of the summer events programme and, to date, have cancelled three events because of bad weather. Although February has been more settled, attendance has remained variable with numerous people pulling out of events at the last minute. The year 2011 will see implementation of a more stringent refund policy.

The overall public satisfaction ratings have still been very high, with people enjoying the walks and interpretation provided, which is very encouraging. The most requested improvement has been for better weather, which we have passed on to the appropriate authorities.

To help boost participation in March events, we have commissioned extra advertising in several community newspapers, along with related media releases.

3.1.2 Planting days

Enquiries from corporate groups are starting to come in, with two confirmed volunteer days in March and August.

Planning is under way in conjunction with the Environment Group to celebrate *10 Years of Care Groups*, with a mass planting day at Queen Elizabeth Park in mid-2010.

3.1.3 Conferences

Staff members are involved with organising the following conferences:

- The New Zealand Institute of Landscape Architecture *The Power of Landscape* to be held at Te Papa 15-17 April. The conference is aimed at stimulating fresh thinking in dealing with contentious landscape issues.
- Restoration Day on 22 May (which is also world Biodiversity Day) at the Silverstream Retreat will have the theme *Looking Back, Going Forward - Learning from the past to build a healthier natural environment*.
- The New Zealand Recreation Association Annual Conference to be held in Wellington in November.

3.2 Research

At the time of writing, the survey project for visitor numbers was scheduled to finish on Saturday, 27 February - a slight extension to the original timeframe because of three cancelled days of work (all of which were on weekends!). Work is now under way to collate all the data and develop a report for the May meeting.

During the period we met with our research provider to commission our annual parks *Community Usage and Awareness* phone survey. Once again, we will be running this jointly with the survey planned by Emergency Management.

3.3 Concessions

From mid-March our Events Advisor will also be co-ordinating the processing of full concessions, which include commercial activities in the regional parks, a function formerly carried out by the Parks Planners. As early summer sees intense activity in both the summer events and concessions, we will employ a full time events assistant over the university summer holidays, rather than the current part-time arrangement.

3.4 Park maps

Significant time has been spent on two series of maps for the Park Network Management Plan. The first shows the current uses and facilities at each park, while the second is a draft of projected changes in each park during the 10 year life of the plan.

Both sets of maps are being discussed and refined prior to the Councillors' workshop on 30 March.

4. Community liaison

4.1 Recent meetings

4.1.1 Friends of Belmont Regional Park

The Parks Planner attended the Friends' first Committee meeting of the year to discuss progress with the Parks Network Management Plan. We have assisted the Friends with planning their Park Open Day, which was held on Sunday, 28 February, and attracted several hundred people.

4.1.2 ARAC

The Parks Planner attended the first of the year's quarterly meetings to discuss progress with the Parks Network Management Plan.

4.1.3 Friends of Queen Elizabeth Park

The main issues discussed were the Parks Network Management Plan, restoration plantings, the proposed new alignment of State Highway 1, which will affect the park, and the recreational cycleway through the park. On 22 March there will be a walkover of the remnant bush and wetland to discuss the draft management site plan that will guide developments in the area over the next 10 years. Staff are organising a public meeting for late March or early April to discuss a draft updated Dunes Restoration Plan.

4.1.4 National cycleway

Unfortunately, the *Central New Zealand Cycleway* proposal submitted to the Ministry of Tourism was not approved to proceed to feasibility study stage. We will continue to support Upper Hutt City Council's efforts to complete the Hutt River Trail to Te Marua, and investigate opportunities to provide better cycling access to Lake Domain near Featherston in conjunction with the other Wairarapa Moana Wetlands project partners.

5. Water usage

Charts detailing water sales for the year are on page 12.

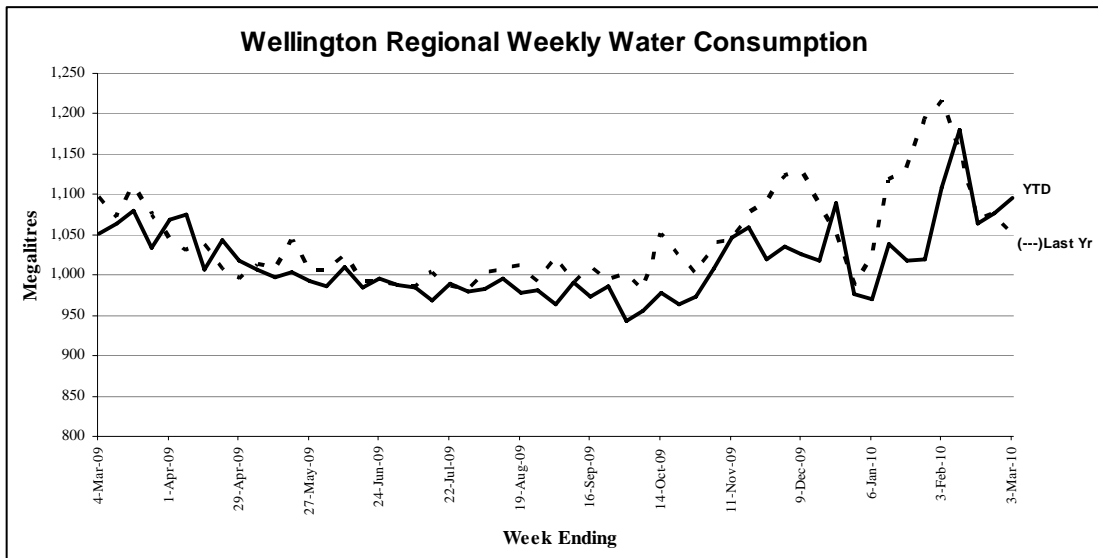


Figure 1 - Water sold over the last 12 months

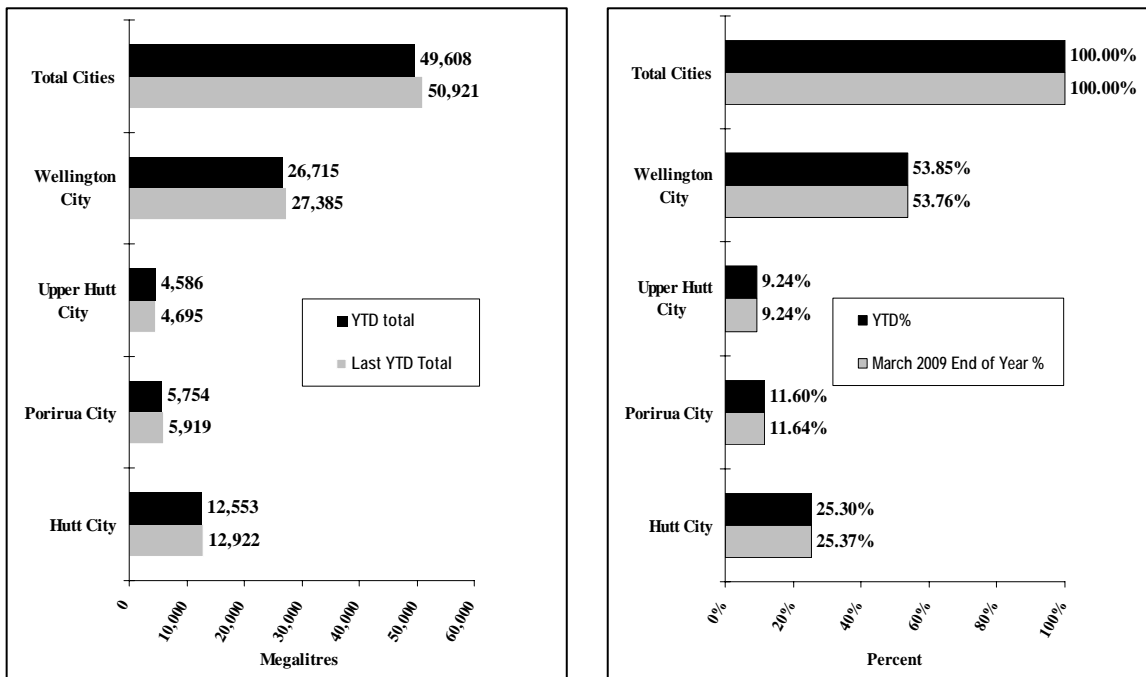


Figure 2 - Water sold during the metering year to date [April 2009 to February 2010]

Water Supply

Review of operations for the period ended 28 February 2010

1. Supply situation

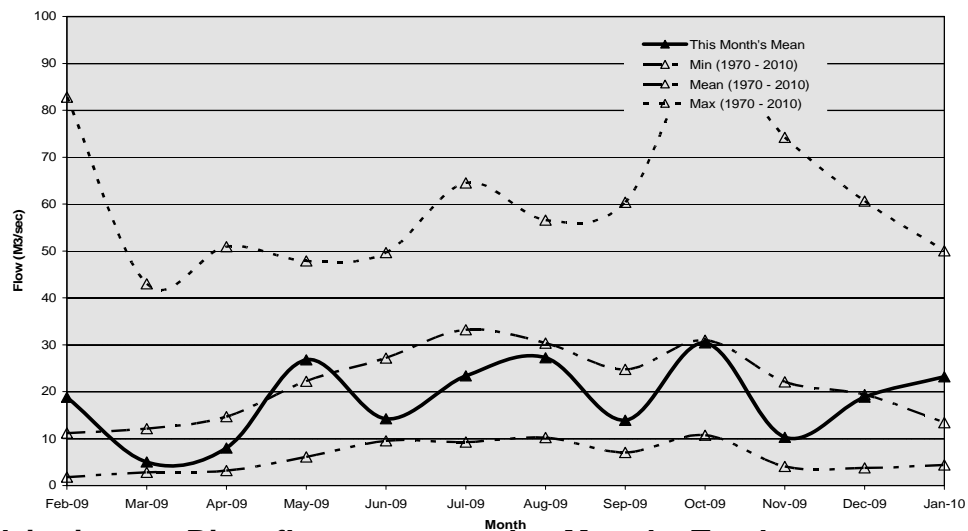
1.1 General

Demand over January and February was lower than for the same period in any of the last five years. Rainfall for the period was variable, with January having twice the long-term average and February only half of the long-term average. A key fact to note is that we did not have any seven day period without rain.

Lakes' storage at the time of writing (2 March 2010) is Lake 1 = 98 percent and Lake 2 = 100 percent.

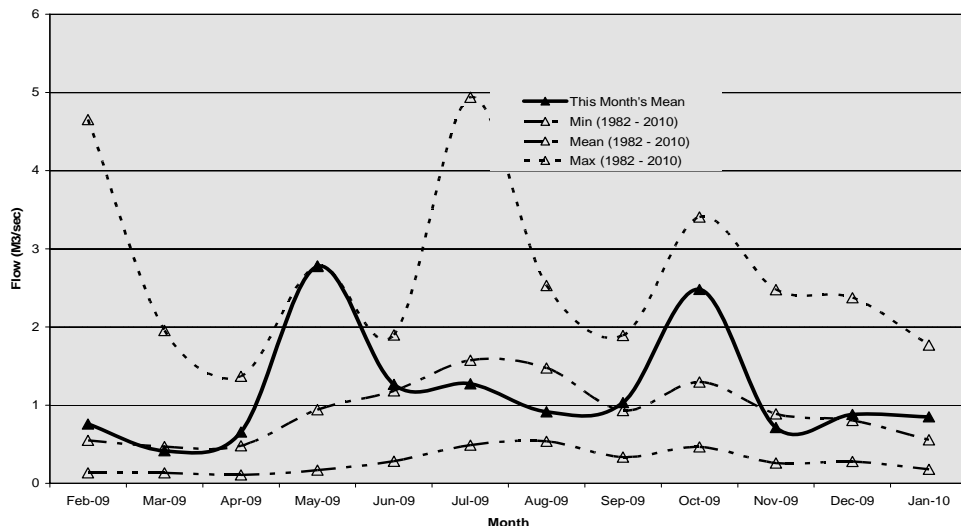
1.2 Hutt River flows measured at Birchville

The mean flow in the Hutt River at Birchville was above the mean during January.



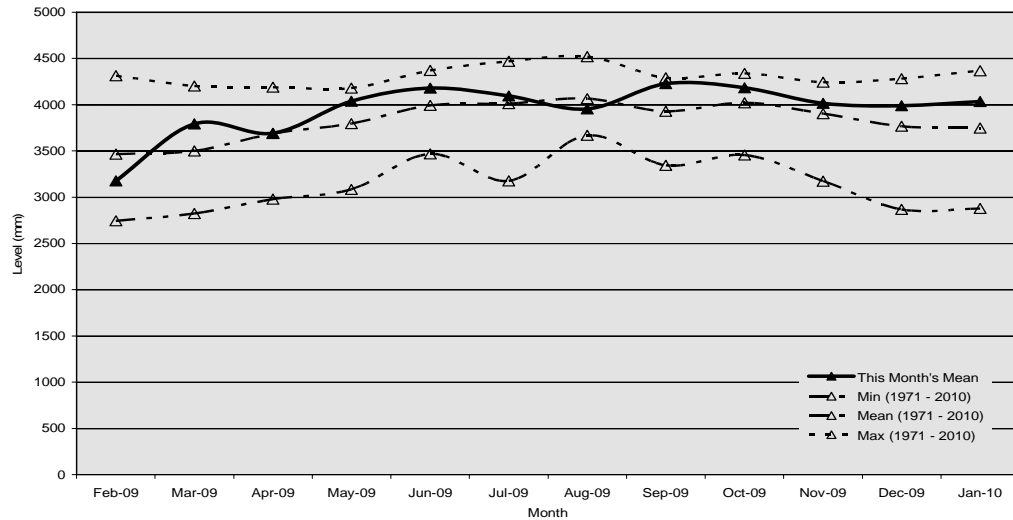
1.3 Wainuiomata River flows measured at Manuka Track

The mean flow in the Wainuiomata River at Manuka Track was above the mean during January.



1.4 Aquifer levels measured at McEwan Park

The water level in the Waiwhetu aquifer during January was above the mean.



2. Pipe break at Motuhara Road, Plimmerton

Apart from some minor planting for the school, this job is complete. Last week we received a thank you letter from Mayor Jenny Brash, which was complimentary about the work. The final cost of this repair work will be around \$210,000.

3. Kaiwharawhara Stream crossing

The photo on page 7 shows the Pipelines Supervisor, Frank O’Keeffe, spreading concrete over a recently laid 300 mm steel pipeline 1 m under the Kaiwharawhara Stream bed, near the Karori Dam. The pump in the background was used to pump the trench dry to prevent alkaline concrete slurry from getting into the stream water and killing stream life. The elevated pipe further in the background will be removed when the undergrounding project is completed.

4. Taste complaints

In late February several calls were received by Porirua City Council to complain about an earthy taste to the water. The complaints relate to a period when Te Marua Water Treatment Plant was using the lake source, which has slightly higher than normal algae numbers.

The frequency of testing lake water has increased from fortnightly to weekly. The next time Te Marua needs to use lake water the Powered Activated Carbon (PAC) dosing plant will be put into service. PAC removes taste and odour compounds from water.

5. Breakdown of centrifuge at Wainuiomata

The centrifuge at Wainuiomata Water Treatment Plant had to be removed from service and sent away for major repairs. The centrifuge is the final stage of the

waste water recovery process and is used to dewater sludge so that it can be trucked to the landfill.

Our intention was to keep the treatment plant in service and truck the unthickened sludge to Te Marua where we have spare dewatering capacity. After operating this way for about a week we found that the trucking costs were higher than expected. Therefore, the decision was made to take Wainuiomata out of service and increase output from Te Marua and Waterloo.

The repaired centrifuge will be retuned and back in operation by about the third week in March.

Development and Strategy

Review of operations for the period ended 28 February 2010

1. **Stuart Macaskill Lakes**

Design of the construction works to raise the water level of each lake and strengthen and line the embankments has commenced. A topographical survey of the site and investigations to confirm the foundation requirements have been completed.

Agreement has been reached with Environment Waikato on the process to be followed for resource consent for the construction work. Environment Waikato will process the consent on behalf of GWRC. A draft outline plan for the work has been provided to Upper Hutt City Council for comment.

The project is proceeding in accordance with the project programme. A key milestone is the advertising of Tenders concurrent with starting to drain Lake 2 in early August 2010. The lake will be drained and the surface given time to dry before work starts on-site.

The impact on water supply with Lake 2 out of service over the summer period has been modelled and compared with recent summer demand. The analysis shows that, with the current Kaitoke water take consent, restrictions will be needed to reduce average and peak demand in a normal year and more severe restrictions if it is a dry year. If the consent change is in place, less severe restrictions would be necessary but only in a dry year.

We are currently developing a methodology to help monitor and manage demand during the summer period, and will be discussing this with our customers to ensure an agreed plan of action is in place.

As previously identified, a communications strategy will be developed to raise consumer awareness of the construction work to be carried out and the need to conserve water.

2. **Reduced low flow at Kaitoke weir**

Internal review of the draft application for a change to the Kaitoke water take consent identified that additional ecological studies of the Hutt River were preferable to improve the application. These studies require low river flows, which generally only occur in February and March.

At the end of February the Hutt River flow had not reduced sufficiently to allow samples to be taken. As the flow at Kaitoke weir reduced closer to the trigger level, small quantities of rainfall were sufficient to provide a short-term peak and prevent the sampling. We are now hopeful that weather conditions will settle to allow the first sampling to occur by mid-March. It is uncertain how many separate samples can be taken before higher river flows return.

The intention is to finalise the consent application to allow a decision to be made in May on whether or not to submit an application.

3. Wainuiomata mini-hydro power generation

Four Tenders were received for the supply of the turbine-generator when the Tender request closed on 7 January 2010. All Tenders were for the supply of an overseas-manufactured turbine generator. We have reviewed the Tenders in-house and MWH New Zealand Ltd has carried out an independent evaluation. Queries and clarification of aspects of the Tenders is proceeding. Prices quoted are in line with the estimate. However, the final price will depend on the foreign exchange rate at the time an order is placed.

Sinclair Knight Merz Ltd will carry out a preliminary design of the civil works and the building to house the generating equipment when the preferred Tenderer is known. The project cost estimate will also be updated.

A resource consent application has been submitted to discharge surplus water into George Creek following power generation and for a discharge structure at the creek.

4. Puketiro wind farm

Documentation for the replacement contract has been agreed with RES New Zealand and execution copies are being prepared. GWRC will sign the documents first and this is expected to occur in March. All copies will be forwarded for signing by RES New Zealand and their parent company in England.

5. Porirua City Council - Plan Change 7

Porirua City Council (PCC) adopted the recommendation of the Hearings Subcommittee on District Plan Change 7 - Wind Farms on 24 February 2010. The decision will not be publicly notified until after publication of NZS 6808:2010, *Acoustics - wind farm noise* (noise standard for wind turbines) expected in early March.

The plan change, in particular, makes wind farm applications non-complying when a turbine is closer than 700 m from the boundary of a site that is not part of the wind farm. GWRC submitted on the plan change, submitting that each wind farm application should be separately considered for compliance with NZS 6808:2010, rather than relying on an arbitrary 700 m distance. PCC is the first territorial authority to have taken such a step.

6. Electricity Industry Bill

A submission has been made by officers of GWRC on the Electricity Industry Bill. The main point at issue relates to the lack of any exemption from the requirement to register and comply with a new industry code. As currently drafted, the Bill allows applications for exemption to be granted or promulgated but no guidelines are provided on the process.

Our submission is that this will place an unnecessary administrative burden and level of uncertainty on organisations with small-scale generation, which are only connected to a local distribution network to occasionally and intermittently export surplus electricity. GWRC would fall into this class of

small scale generators from its mini-hydro generation at Te Marua and planned for Wainuiomata.

The submission called for a specific exemption from the requirement to register and comply with the code where the total nominal generating capacity is not greater than 5 GWh per year.

Emergency Management

Review of operations for the period ended 28 February 2010

1. Civil Defence Emergency Management (CDEM) projects

1.1 General

The CDEM Group Office is continuing to work on the following four programmes: a review of the CDEM Group Plan; a communications' review; GIS in emergency management and external supply of resources. Progress with these is reported below.

The CDEM Group Plan also lists several ongoing CDEM Group activities such as hazard analysis, business continuity planning, asset management planning, public training, hazardous substances industry advocacy, volunteer training, professional development programmes for CDEM staff and CDEM Group appointees.

1.2 Second generation CDEM Group Plan development

1.2.1 Framework

The Plan is a statutory plan required under the *Civil Defence Emergency Management Act 2002* (s. 48).

1.2.2 Progress

Because of higher priority work related to the feasibility of shared services; this plan is now on hold until a decision is made on the way forward for CDEM in the Wellington Region.

In addition to this, the Group Office (with support from the Ministry of Civil Defence Emergency Management [MCDEM]) will be running an integrated planning workshop, to identify the current gaps and barriers which are inhibiting integrated planning between local authorities and other relevant legislation.

1.3 Communications review

1.3.1 Background

- **VHF radio equipment**

During 1995, 22 VHF radio units were purchased and supplied to response agencies throughout the Region. The equipment is aging and needs to be replaced to ensure its effectiveness in an event.

- **Mt Climie site security**

Over the past five years security at the Mt Climie Repeater site has become an issue. Equipment has been tampered with and the building has been vandalised. Site security and the *Mt Climie User Protocols* will be reviewed.

- **Data transfer**

Sending data during a large-scale event is crucial in this digital age. Technologies have come a long way in recent years and data transfer via satellite is more reliable and affordable. This review will address the options and costs of satellite data transfer systems.

1.3.2 Progress

- **VHF radio equipment**

All current costs and options have been assessed but may be affected by the MCDEM communications project, the Public Protection and Disaster Relief (PPDR) initiative and/or any digital communications networks adopted by the Emergency Services. Once a full understanding of these influences (mid-2010) is gained, a draft report will be finalised and released to the CDEM sector for consultation.

- **Mt Climie site survey**

A committee has been convened to manage activities on the site. The committee has agreed on the draft Mt Climie protocols, which have been released for consultation.

- **Data transfer**

Data transfer techniques and options have been investigated. We have received demonstrations of the two key data transfer systems available in New Zealand and have equipment and plan prices.

1.4 External supply of resources

1.4.1 Aim

The aim of the *External Supply of Resources Plan* is to review existing processes, procedures and arrangements for getting critical resources into the Region following a disastrous event. This plan will help to align all the agencies involved with external supply of resources, map and preconceive possible delivery locations and document how other regions in New Zealand can help this Region in a large-scale event.

1.4.2 Progress

- External supply procedures and mapping were completed
- Maps of potential landing areas within the Wellington harbour have been completed
- Staging areas of territorial authorities have been collated and will be plotted on GIS maps
- The MCDEM has initiated a National Logistics Project which is expected to have many implications on the *External Supply of Resources Plan*. A comprehensive understanding of external supply will not be deliverable until the completion the Logistics project (early 2011). Until then, the *External Supply of Resources Plan* will be completed for the Wellington Region by 30 June 2010

1.5 GIS in Emergency Management

A guide for GIS in Emergency Management was developed by a National GIS Group in 2007. It provided recommendations on using GIS during readiness and response.

This project aims to ensure that the readiness section of this report is implemented at the Group level to ensure the Group Emergency Operations Centre (GEOC) has some GIS capability during response.

2. Civil Defence Emergency Management Group (CDEM Group) activities

- Preparing order papers for Co-ordinating Executives Group meetings
- Preparing order papers for CDEM Group meetings
- Keeping the CDEM Group Emergency Operations Centre in a state of readiness
- Developing and maintaining public education and information programmes
- Maintaining a robust communications system for emergency management in the Region
- Training and development of council volunteer staff, controllers, recovery managers, etc.
- Planning and executing exercises to test the CDEM Group's capabilities and capacities

3. Sharing of services project

The Wellington Region's Chief Executives requested a project be lodged to investigate *a best CDEM structure and delivery model for the Wellington Region*.

An external consultant was appointed by the Chief Executives to carry out the initial research and to come up with options regarding structures, arrangements (including rate funding models), and the CDEM capabilities and capacities within the Region.

The Chief Executives will consider a report at their next meeting.